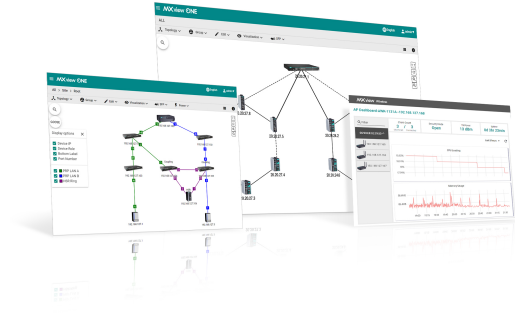


MXview One 系列

新一代工業網路管理平台

特色與優點

- 自動偵測與可視化網路裝置和實體連線
- 為 Moxa 設備集中管理配置和韌體
- 提供各種事件和通知模式，用戶可自訂臨界值和持續時間
- 提供全面性報告，包括存貨、流量和適用性報告
- 提供 RESTful API 和網路小工具，可將 MXview One 嵌入工業級應用程式
- 動態拓撲圖一目了然地顯示無線網路狀態和連接變化¹
- 可視化互動式漫遊回放功能，可檢視客戶端的漫遊歷史¹
- 個別 AP 與客戶端裝置之詳細裝置資訊與效能指示器圖表¹
- 透過可視化的 PRP/HSR 網路拓撲和變電站資料包流資訊全面了解 A/B LAN 冗餘²
- GOOSE 訊息路徑追蹤可實現快速且有效率的故障排除³
- 透過匯入 SCD 檔案在網路拓撲顯示中自動發現 IED²



簡介

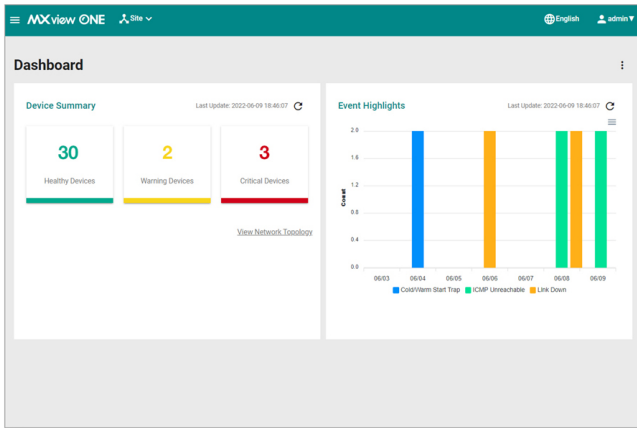
Moxa MXview One 新一代網路管理軟體專為監視以及診斷工業網路之網路設計的裝置。MXview One 提供整合管理平台，可發現安裝在子網路的網路裝置與 SNMP/IP 裝置。可隨時隨地從本機或透過遠端站點的網頁瀏覽器，管理所有已選取的網路構成要素。

此外，MXview One 支援選配的 MXview 無線⁴以及，MXview 電力³附加模組。MXview Wireless 提供附加進階功能，供無線應用程式監控及排除網路故障，並最大程度協助縮短停機時間。MXview 電力為基於 IEC 61850 的電力應用提供附加進階功能，即時監控變電站網路並排除故障。

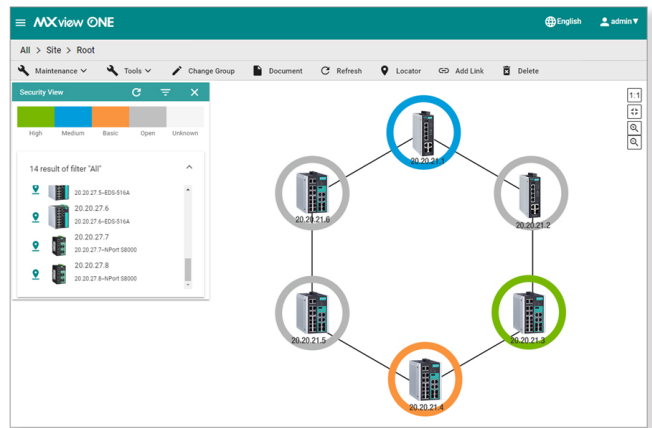
視覺化

- 發現掃描範圍內多達 2000 件 Moxa 裝置與 SNMP/ICMP 裝置
- 將冗餘網路狀態和網路冗餘協定的設備角色視覺化
- 顯示符合工業資安標準之網路裝備的安全狀態之安全檢視
- 網路管理儀表板可快速檢視網路狀態
- 使用色碼連結將網路流量負載視覺化
- 受管理 PoE 裝置電能消耗的視覺化
- 用於光纖檢查的 SFP 列表
- 無線裝置儀表板顯示 AP 與客戶端之間的動態關係、與無線裝置效能指標圖表¹
- 漫遊回放功能，查看用戶端漫遊狀態¹
- 適用於符合 IEC-61850 的電力應用的 PRP/HSR 可視化³
- 用於識別相關 IED 裝置的 MMS 協定³

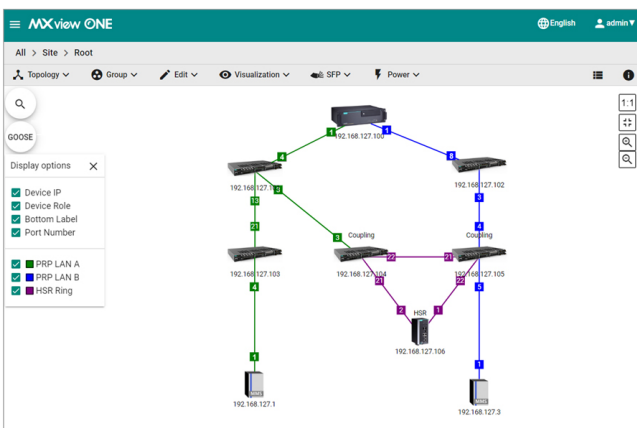
1. 此功能需要 MXview 無線附加授權 (LIC-MXviewOne-ADD-WIRELESS-MR)，可個別購買。需要一個主動 MXview One 授權用來啟用附加授權。
2. 此功能需要 MXview 電力附加許可證 (LIC-MXviewOne-ADD-POWER-MR)，可個別購買。需要一個主動 MXview One 授權用來啟用附加授權。
3. 此功能需要 MXview 電力附加授權 (LIC-MXviewOne-ADD-POWER-MR)，可個別購買。需要一個主動 MXview One 授權用來啟用附加授權。
4. 此功能需要 MXview 無線附加授權 (LIC-MXviewOne-ADD-WIRELESS-MR)，可個別購買。需要有效的 MXview One 許可證才能啟動附加許可證。



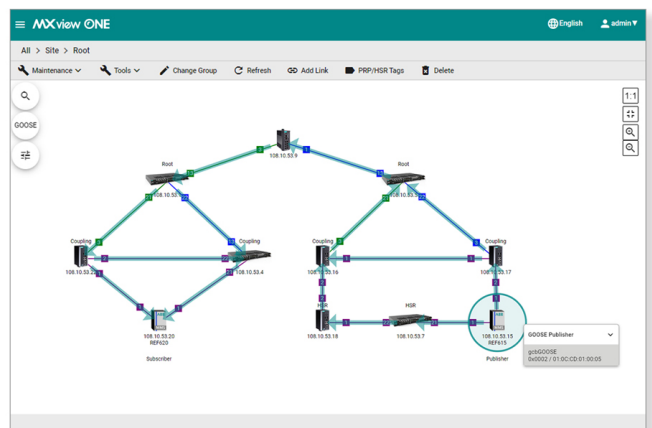
Main Dashboard



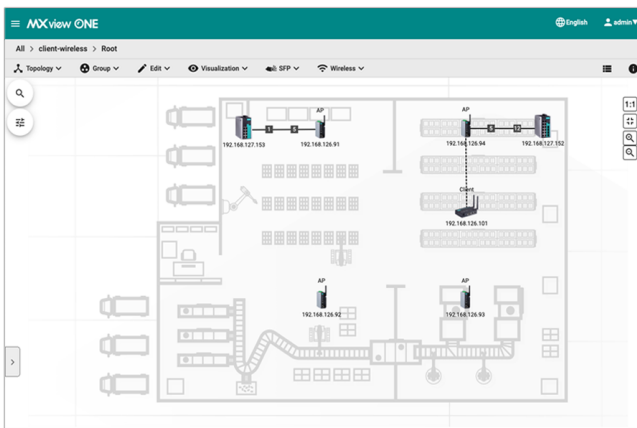
Security View



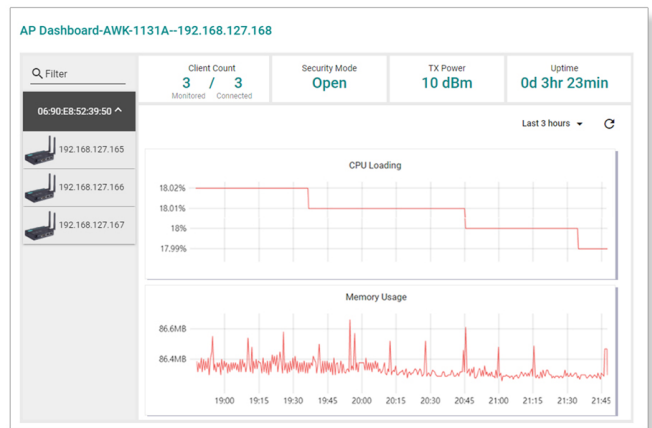
Power Redundancy Topology



GOOSE Message Visualization



Dynamic Topology



Device Dashboard

網路診斷與事件通知

- 使用 SNMP 陷阱/通知或定期輪詢即時偵測問題
- 產生趨勢圖表追蹤頻寬使用率，和錯誤封包速率統計資料，精確到小數點後四位
- 支援 Syslog 伺服器進行集中訊息管理

- 透過電子郵件發送可設定的事件通知警報
- 具有可自訂臨界值和持續時間的事件的各種事件選項
- 即時裝置適用性監控
- 提供 RESTful API 和網路小工具，可將 MXview One 整合至現有系統

全面性報告

- 為網絡上每個裝置產出一個存貨報告
- 匯編全面性裝置屬性報告

集中配置與韌體管理

- 從單一平台管理裝置韌體
- 一鍵備份多臺裝置和整個 MXview One 資料庫的配置，包括拓樸、任務排程、事件和裝置屬性
- 設定定期備份配置
- 儲存配置變更歷史
- 核對 2 種配置之差異的比較工具

靈活的授權

- 按需式授權可增加監控節點限制
- 可選的 MXview 電力和 MXview 無限附加授權可解鎖進階功能

規格

Hardware Requirements

CPU	Quad-core CPU or better
RAM	16 GB or higher
Hardware Disk Space	1 TB SSD or higher
OS	Windows 10 (64-bit) Windows 11 (64-bit) Windows Server 2016 (64-bit) Windows Server 2019 (64-bit) Windows Server 2022 (64-bit) Linux Ubuntu 18.04 Linux Ubuntu 20.04 Linux Ubuntu 22.04

Management

Supported Interfaces	SNMPv1/v2c/v3 and ICMP
----------------------	------------------------

Supported Devices

AWK Products	AWK-1121 Series (v1.4 or higher) AWK-1127 Series (v1.4 or higher) AWK-1131A Series (v1.11 or higher) AWK-1137C Series (v1.1 or higher) AWK-1151C Series (v2.0 or higher) AWK-3121 Series (v1.6 or higher) AWK-3131 Series (v1.1 or higher) AWK-3131A Series (v1.3 or higher) AWK-3131A-M12-RTG Series (v1.8 or higher) AWK-3252A Series (v2.0 or higher) AWK-4121 Series (v1.6 or higher) AWK-4131 Series (v1.1 or higher) AWK-4131A Series (v1.3 or higher) AWK-4252A Series (v2.0 or higher)
DA Products	DA-820C Series (v1.0 or higher) DA-682C Series (v1.0 or higher) DA-681C Series (v1.0 or higher) DA-720 Series (v1.0 or higher)
EDR Products	EDR-G903 Series (v2.1 or higher) EDR-G902 Series (v1.0 or higher) EDR-810 Series (v3.2 or higher) EDR-8010 Series (v3.1 or higher) EDR-G9010 Series (v1.0 or higher)
EDS Products	EDS-405A/408A Series (v2.6 or higher) EDS-405A/408A-EIP Series (v3.0 or higher) EDS-405A/408A-PN Series (v3.1 or higher) EDS-405A-PTP Series (v3.3 or higher) EDS-505A/508A/516A Series (v2.6 or higher) EDS-510A Series (v2.6 or higher) EDS-518A Series (v2.6 or higher)

	<p>EDS-510E/518E Series (v4.0 or higher)</p> <p>EDS-528E Series (v5.0 or higher)</p> <p>EDS-G508E/G512E/G516E Series (v4.0 or higher)</p> <p>EDS-G512E-8PoE Series (v4.0 or higher)</p> <p>EDS-608/611/616/619 Series (v1.1 or higher)</p> <p>EDS-728 Series (v2.6 or higher)</p> <p>EDS-828 Series (v2.6 or higher)</p> <p>EDS-G509 Series (v2.6 or higher)</p> <p>EDS-P510 Series (v2.6 or higher)</p> <p>EDS-P510A-8PoE Series (v3.1 or higher)</p> <p>EDS-P506A-4PoE Series (v2.6 or higher)</p> <p>EDS-P506 Series (v5.5 or higher)</p> <p>EDS-4008 Series (v2.2 or higher)</p> <p>EDS-4009 Series (v2.2 or higher)</p> <p>EDS-4012 Series (v2.2 or higher)</p> <p>EDS-4014 Series (v2.2 or higher)</p> <p>EDS-G4008 Series (v2.2 or higher)</p> <p>EDS-G4012 Series (v2.2 or higher)</p> <p>EDS-G4014 Series (v2.2 or higher)</p>
EOM Products	EOM-104/104-FO Series (v1.2 or higher)
ICS Products	<p>ICS-G7526/G7528 Series (v1.0 or higher)</p> <p>ICS-G7826/G7828 Series (v1.1 or higher)</p> <p>ICS-G7748/G7750/G7752 Series (v1.2 or higher)</p> <p>ICS-G7848/G7850/G7852 Series (v1.2 or higher)</p> <p>ICS-G7526A/G7528A Series (v4.0 or higher)</p> <p>ICS-G7826A/G7828A Series (v4.0 or higher)</p> <p>ICS-G7748A/G7750A/G7752A Series (v4.0 or higher)</p> <p>ICS-G7848A/G7850A/G7852A Series (v4.0 or higher)</p>
IEX Products	<p>IEX-402-SHDSL Series (v1.0 or higher)</p> <p>IEX-402-VDSL2 Series (v1.0 or higher)</p> <p>IEX-408E-2VDSL2 Series (v4.0 or higher)</p>
IKS Products	<p>IKS-6524/6526 Series (v2.6 or higher)</p> <p>IKS-G6524 Series (v1.0 or higher)</p> <p>IKS-G6824 Series (v1.1 or higher)</p> <p>IKS-6726A/6728A Series (v4.0 or higher)</p> <p>IKS-G6524A Series (v4.0 or higher)</p> <p>IKS-G6824A Series (v4.0 or higher)</p> <p>IKS-6728A-8PoE Series (v4.0 or higher)</p>
ioLogik Products	<p>ioLogik E2210 Series (v3.7 or higher)</p> <p>ioLogik E2212 Series (v3.7 or higher)</p> <p>ioLogik E2214 Series (v3.7 or higher)</p> <p>ioLogik E2240 Series (v3.7 or higher)</p> <p>ioLogik E2242 Series (v3.7 or higher)</p> <p>ioLogik E2260 Series (v3.7 or higher)</p> <p>ioLogik E2262 Series (v3.7 or higher)</p> <p>ioLogik W5312 Series (v1.7 or higher)</p> <p>ioLogik W5340 Series (v1.8 or higher)</p>
ioThinX Products	ioThinX 4510 Series (v1.3 or higher)
MC Products	MC-7400 Series (v1.0 or higher)
MDS Products	<p>MDS-G4012 Series (v1.0 or higher)</p> <p>MDS-G4020 Series (v1.0 or higher)</p> <p>MDS-G4028 Series (v1.0 or higher)</p> <p>MDS-G4012-L3 Series (v2.0 or higher)</p> <p>MDS-G4020-L3 Series (v2.0 or higher)</p> <p>MDS-G4028-L3 Series (v2.0 or higher)</p> <p>MDS-G4012-4XGS Series (v3.0 or higher)</p> <p>MDS-G4020-4XGS Series (v3.0 or higher)</p> <p>MDS-G4028-4XGS Series (v3.0 or higher)</p> <p>MDS-G4012-L3-4XGS Series (v3.0 or higher)</p> <p>MDS-G4020-L3-4XGS Series (v3.0 or higher)</p> <p>MDS-G4028-L3-4XGS Series (v3.0 or higher)</p>
MGate Products	<p>MGate MB3170/MB3270 Series (v4.2 or higher)</p> <p>MGate MB3180 Series (v2.2 or higher)</p>

	<p>MGate MB3280 Series (v4.1 or higher) MGate MB3480 Series (v3.2 or higher) MGate MB3660 Series (v2.5 or higher) MGate 5101-PBM-MN Series (v2.2 or higher) MGate 5102-PBM-PN Series (v2.3 or higher) MGate 5103 Series (v2.2 or higher) MGate 5105-MB-EIP Series (v4.3 or higher) MGate 5109 Series (v2.3 or higher) MGate 5111 Series (v1.3 or higher) MGate 5114 Series (v1.3 or higher) MGate 5118 Series (v2.2 or higher) MGate 5119 Series (v1.0 or higher) MGate W5108/W5208 Series (v2.4 or higher) MGate 5217I Series (v1.0 or higher)</p>
NPort Products	<p>NPort S8455 Series (v1.3 or higher) NPort S8458 Series (v1.3 or higher) NPort 5110 Series (v2.10 or higher) NPort 5130/5150 Series (v3.9 or higher) NPort 5200 Series (v2.12 or higher) NPort 5100A Series (v1.6 or higher) NPort P5150A Series (v1.6 or higher) NPort 5200A Series (v1.6 or higher) NPort 5400 Series (v3.14 or higher) NPort 5600 Series (v3.10 or higher) NPort 5610-8-DT/5610-8-DT-J/5650-8-DT/5650I-8-DT/5650-8-DT-J Series (v2.7 or higher) NPort 5610-8-DTL/5650-8-DTL/5650I-8-DTL Series (v1.6 or higher) NPort IA5000 Series (v1.7 or higher) NPort IA5150A/IA5150AI/IA5250A/IA5250AI Series (v1.5 or higher) NPort IA5450A/IA5450AI Series (v2.0 or higher) NPort 6000 Series (v1.21 or higher) NPort 5000AI-M12 Series (v1.5 or higher)</p>
OnCell Products	<p>OnCell G4302-LTE4 Series (v2.5 or higher)</p>
PT Products	<p>PT-7528 Series (v3.0 or higher) PT-7710 Series (v1.2 or higher) PT-7728 Series (v2.6 or higher) PT-7828 Series (v2.6 or higher) PT-508/510 Series (v3.0 or higher) PT-G503-PHR-PTP Series (v4.0 or higher) PT-G510 Series (v6.4 or higher) PT-G7728 Series (v5.3 or higher) PT-G7828 Series (v5.3 or higher)</p>
RKS Products	<p>RKS-G4028 Series (v3.0 or higher)</p>
SDS Products	<p>SDS-3008 Series (v2.1 or higher) SDS-3016 Series (v2.1 or higher)</p>
TAP Products	<p>TAP-213 Series (v1.2 or higher) TAP-323 Series (v1.8 or higher) TAP-6226 Series (v1.8 or higher)</p>
TN Products	<p>TN-4908 non-PoE Series (v1.2 or higher) TN-4908/4916 PoE Series (v1.2 or higher) TN-4512A Series (v3.10 or higher) TN-4516A Series (v3.6 or higher) TN-4516A PoE Series (v3.6 or higher) TN-4520A PoE Series (v3.10 or higher) TN-4524A PoE Series (v3.6 or higher) TN-4528A PoE Series (v3.8 or higher) TN-G4516 PoE Series (v5.0 or higher) TN-G6512 PoE Series (v5.2 or higher) TN-5508A/5510A Series (v3.8 or higher) TN-5516A/5518A Series (v3.8 or higher) TN-5508A/5510A PoE Series (v3.8 or higher) TN-5516A/5518A PoE Series (v3.8 or higher)</p>
UC Products	<p>UC-2101-LX Series (v1.7 or higher) UC-2102-LX Series (v1.7 or higher)</p>

	UC-2104-LX Series (v1.7 or higher) UC-2111-LX Series (v1.7 or higher) UC-2112-LX Series (v1.7 or higher) UC-2112-T-LX Series (v1.7 or higher) UC-2114-T-LX Series (v1.7 or higher) UC-2116-T-LX Series (v1.7 or higher) UC-1222A Series (v1.0 or higher) UC-2222A Series (v1.0 or higher) UC-8200 Series with Moxa Industrial Linux 3 (MIL 3) (v1.1 or higher)
V Products	V2406C Series (v1.0 or higher)
VPort Products	VPort 26A-1MP Series (v1.2 or higher) VPort 36-1MP Series (v1.1 or higher) VPort P06-1MP-M12 Series (v2.2 or higher)
WAC Products	WAC-1001 Series (v2.1 or higher) WAC-2004 Series (v1.6 or higher)
For MXview Wireless	AWK-1131A Series (v1.22 or higher) AWK-1137C Series (v1.6 or higher) AWK-1151C Series (v2.0 or higher) AWK-3252A Series (v2.0 or higher) AWK-3131A Series (v1.16 or higher) AWK-4131A Series (v1.16 or higher) AWK-4252A Series (v2.0 or higher) Note: To use advanced wireless functions in MXview Wireless, the device must be in one of the following operation modes: AP, Client, Client-Router.
For MXview Power	Supports PRP/HSR only: PT-G503 Series (v5.1 or higher) PT-G510 Series (v6.4 or higher) DA-820C Series with DN-PRP-HSR-I210 or DA-PRP-HSR-I210 (OS Windows 10 or higher) Supports PRP/HSR and GOOSE Check: PT-G7728/G7828 with LM-7000H-2GPHR module (v6.2 or higher)

Package Contents

Number of Supported Nodes	Up to 2000 (may require purchase of expansion licenses)
---------------------------	---

訂購資訊

Model Name	No. of Supported Nodes	Add-on Service
LIC-MXviewOne-NEW-XN-SR	Customizable (Can be used to expand node count)	-
LIC-MXviewOne-ADD-POWER-MR	-	MXview Power
LIC-MXviewOne-ADD-WIRELESS-MR	-	MXview Wireless

© Moxa Inc. 版權所有.2024 年 1 月 24 日更新。

未經 Moxa Inc. 明確書面許可，不得以任何方式複製或使用本文件及其任何部分。產品規格如有變更，恕不另行通知。請至本公司官網了解最新的產品資訊。