

UPort™ 1200-G2 Series Quick Installation Guide

Version 1.1, March 2026

Technical Support Contact Information
www.moxa.com/support

MOXA®

© 2026 Moxa Inc. All rights reserved.

P/N: 1802012005002



Overview

Moxa's USB-to-serial products provide a wide range of easy-to-use solutions for adding Windows COM ports, macOS, and Linux tty ports through a USB port of a computer. The UPort 1200-G2 Series comprises the following models:

2-port Models

UPort 1250-G2	RS-232/422/485 USB-to-serial converter	0 to 60°C (32 to 140°F)
UPort 1250-G2-T	RS-232/422/485 USB-to-serial converter	-40 to 75°C (-40 to 167°F)
UPort 1250I-G2	RS-232/422/485 USB-to-serial converter with isolation protection	0 to 60°C (32 to 140°F)
UPort 1250I-G2-T	RS-232/422/485 USB-to-serial converter with isolation protection	-40 to 75°C (-40 to 167°F)

Package Checklist

After opening the box, verify that the package contains the following items:

- 1 UPort 1200-G2 USB-to-serial converter
- 1 USB cable with latch, CBL-USB3-BA-G-120, hook and screw, 1.2m
- Quick installation guide (printed)
- Warranty card (printed)

NOTE Notify your sales representative if any of the above items are missing or damaged.

Accessories



WARNING

This product is intended to be supplied by an approved external power source (UL listed/IEC 60950-1/IEC 62368-1), which output complies with ES1/SELV, PS2/LPS, output rating 5 VDC, 1 A minimum (by USB port), and ambient temperature of 75°C minimum. If further information or help is needed, please contact your Moxa representative. If a Class I power source is used, the power cord should be connected to a socket outlet with an earthing connection.

Cables

- CBL-USB3-BA-G-120: USB 3.2 Gen 1 cable with latch, 1.2 M
- CBL-USB3-BA-G-028: USB 3.2 Gen 1 cable with latch, 0.28 M
- CBL-USB3-BA-B-120: Standard USB 3.2 Gen 1 cable, 1.2 M

DIN-rail Kits:

- DK-115-01: DIN-rail mounting kit with 1 plate (89 x 19 mm), 3 M3 x 5mm screws and SK-115-01 side-mounting kit.
- DK-43-01: DIN-rail mounting kit with 2 plates (42.5 x 19.3 mm), 4 M3 x 6 mm screws (black). Needs to work with WK-32-01.

Wall-mounting Kits:

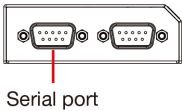
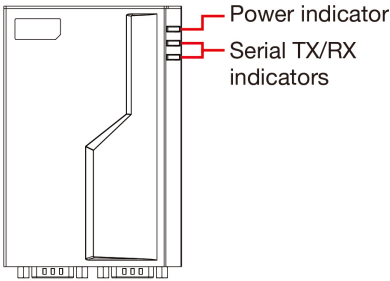
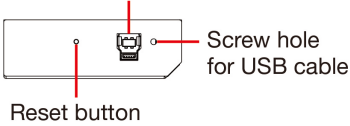
- WK-32-01: Wall-mounting kit with 2 plates (32 x 29.5 mm), 4 M3 x 6 mm screws.

Adapters:

- LB-DB9F-G-01: Serial loopback adapter
- ADP-RJ458P-DB9F: DB9F-to-RJ45 adapter
- Mini DB9F-to-TB: DB9F-to-TB adapter

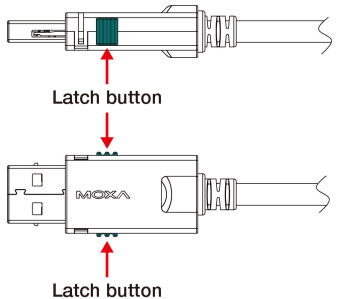
Hardware Introduction

Upstream USB 3.2
type B connector



USB Cable Usage Guide

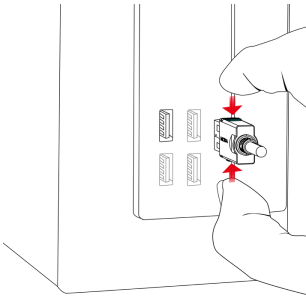
The new Moxa latch USB cable comes with a latch on each side of the Type-A connector and a screw on the Type-B connector.



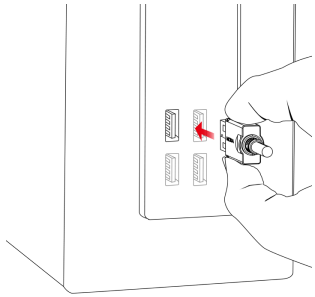
Plugging in the USB Cable Using the Type A Connector

To plug in the USB cable to the host computer and secure it, do the following:

Step 1: Press both latches on the connector.

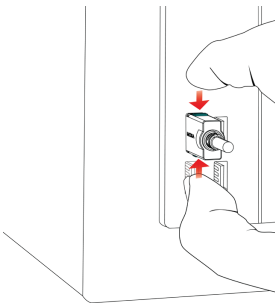


Step 2: Plug the connector into the USB slot.

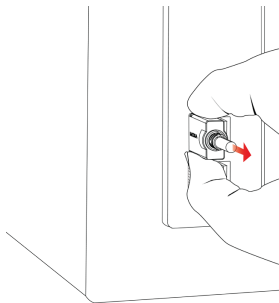


Removing the USB Cable

Step 1: Press both latches on the USB cable connector hard so that they are pushed to the maximum.



Step 2: Unplug and pull out the cable 90 degrees horizontal to the USB socket.



ATTENTION

Be cautious when plugging in or out the latch connector.

1. When the cable is plugged into a host computer or pulled out every time, always press both latches. Then, plug the connector into the receptacle on your computer or vice versa.
2. If the type A connector doesn't come off easily, **DO NOT** pull the cable out by force as it will deform the hook on the connector, and you may not be able to use the cable again. Try again by pushing the latch hard and shake the connector left to right gently.

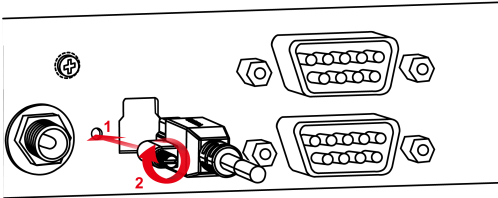
NOTE The latch cable locks to most USB slots on computers; however, there may be some slots that are designed with a slight marginal difference, which may cause the latch not to lock to your computer's USB slots perfectly.

Plugging in a USB Cable to the Host Computer Using Type B Connector

The screw on the side of type B connector is for fixing the cable firmly to the UPort. Please remember to swivel the bolt after plugging in and before pulling out the connector.

Step 1: Plug in type B connector.

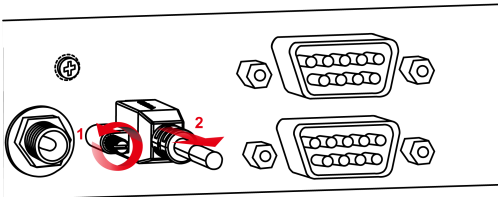
Step 2: Swivel the bolt about five rounds.



Pulling out a USB cable from the host computer

Step 1: Swivel the bolt about five rounds until it becomes loose.

Step 2: Pulling out type B connector.



LED Indicators

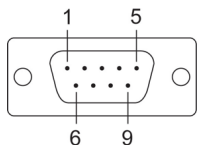
The LED indicators on the front panel are used to display the status as follows:

Function	Color	Definition
READY	Red	Power is on and the system is not yet ready
	Green	System is up and ready
	Green blinks	Locate in action
	Off	Unit is not powered or out of operation
P1/P2	Green blinks	Transmitting data
	Orange blinks	Receiving data
	Off	No data is being received, or the serial device is not connected or out of operation

Serial Port Pin Assignments

The serial ports on the UPort 1200-G2 have DB9 male connectors. Refer to the following table below for the RS-232 and RS-422/485 pin assignments.

**Serial Port
(Male DB9)**



Pin	RS-232	RS-422/ RS-485-4W	RS-485-2W
1	DCD	TxD-(A)	-
2	RXD	TxD+(B)	-
3	TXD	RxD+(B)	Data+(B)
4	DTR	RxD-(A)	Data-(A)
5	GND	GND	GND
6	DSR	-	-
7	RTS	-	-
8	CTS	-	-
9	-	-	-

NOTE For the UPort with DB9 male serial ports, you may refer to the *Serial Port Pin Assignments* section to loop back pin 2 and pin 3 for the RS-232 interface to carry out a self-test on the device. You may refer to *Communication Testing* in the *Software Installation* section in this document for how to use the loopback connector in the box to perform the communication test.

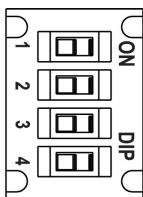
Adjustable Pull High/low Resistors for the RS-485 Port

The UPort uses DIP switches to set the pull high/low resistor values for each serial port.

To set the pull high/low resistors to 150 K Ω , make sure both SW 1 and SW 2 switches are in the **OFF** position. This is the **default setting**.

To set the pull high/low resistors to 1 K Ω , make sure both SW 1 and SW 2 switches are in the **ON** position.

To set the termination on, SW 3 should be set to the **ON** position.



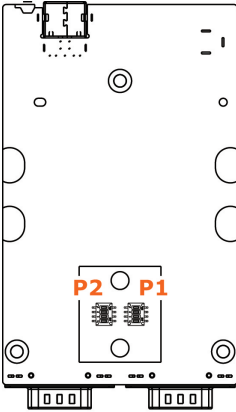
Switch	1	2	3	4
	Pull High	Pull Low	Termination	-
ON	1 K Ω	1 K Ω	120 Ω	-
OFF	150 K Ω	150 K Ω	-	-



ATTENTION

Do not use the 1-k Ω setting on the UPort when using an RS-232 interface. Doing so will degrade the RS-232 signals and shorten the maximum allowed communication distance.

DIP Switches Location




Software Installation

To install the UPort driver, please follow the installation procedure described in the *Mounting the UPort 1200-G2* section. UPort converters can be connected to any upstream type A USB port that is on the PC host or an upstream hub. UPort converters are hot-pluggable, so there is no need to power down your computer prior to installation.

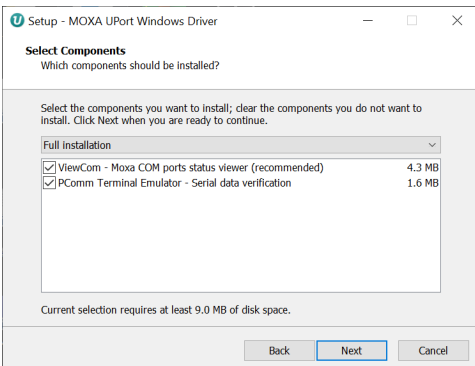
After successfully installing the UPort, you can use the operating system's device manager to check and/or change the port settings. In Windows, the new COM port will be listed under Ports (COM & LPT).

Installing the Windows Driver

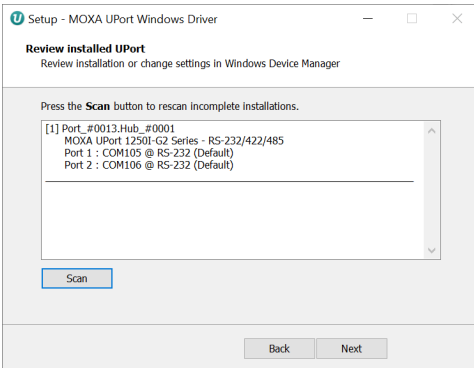
Download and run the Setup program  from the UPort's product page and follow the installation steps.

A few things to note:

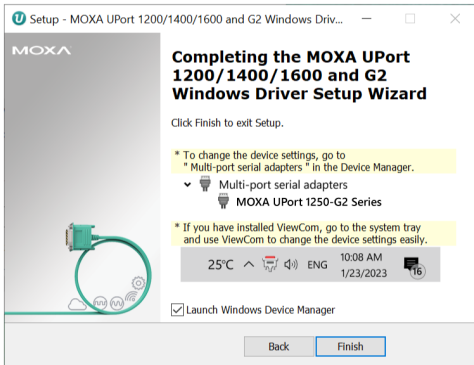
1. We recommend also installing companion utilities for future use. For an introduction of the utility, refer to the *User Manual*.



2. After successfully installing the driver, connect the UPort to your computer. Then, click **Scan** to review the installation results and confirm that the UPort is connected to your computer.



3. Check **Launch Windows Driver Manager** to configure the UPort after the setup is completed.

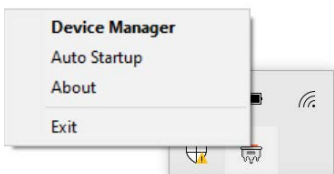


4. If you have installed **ViewCOM**, you can mouse over the **ViewCOM** icon in the system tray to see the relevant COM port information.

MOXA UPort 1250-G2
MOXA Serial Port 1 (COM33)
MOXA Serial Port 2 (COM34)



The right-click context menu has the shortcut to **Windows Device Manager** and **Auto Startup** utilities if needed.



For configuration details, check the *COM Port Configuration* section in the *User Manual*.

Installing the Linux Driver

Run the following commands from the Linux prompt:

```
# CD /moxa
# tar xvfz moxa-uport-1200-1400-1600-series-linux-kernel-
[keyrel version]-driver-v[driver version].tgz
```

Find the **Makefile** file in **/moxa/mxuport** and run the commands:

```
# make install
# modprobe mxuport
```

For further information, refer to the *User Manual* or the **readme.txt** that comes with the driver package.

Installing the Linux Driver for Arm-based Platforms

Please refer to the **Tech Note: UPort Driver Arm-based Platform Porting Guide** on the product page or the **readme.txt** that comes with the driver package.

Installing the macOS Driver

For macOS 10.12 and later, follow the steps below to install the driver:

1. Enter recovery mode.
2. Disable System Integrity Protection (SIP) by running the **csrutil disable** command from the terminal.
3. Return to normal mode.
4. Launch the UPort driver installer and complete the installation procedure.
5. Re-enter the recovery mode.
6. Enable System Integrity Protection (SIP) by running the **csrutil enable** command from the terminal.
7. Return to normal mode.

For detailed instructions, please refer to the *User Manual* on the product page or the **readme.txt** that comes with the driver package.

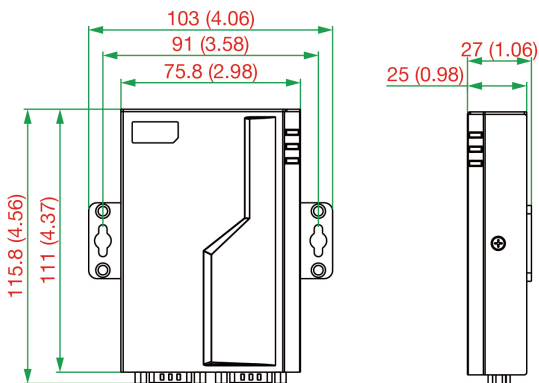
Communication Testing

There are Moxa companion utilities for serial communication testing. For this purpose, you may use **PComm Terminal**. For other useful utilities, please refer to the UPort's *User Manual* for an introduction.

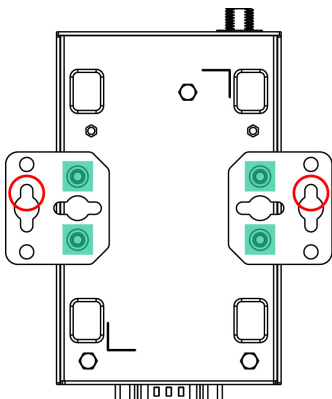
Mounting the UPort 1200-G2

Dimensions

Unit = mm (inches)



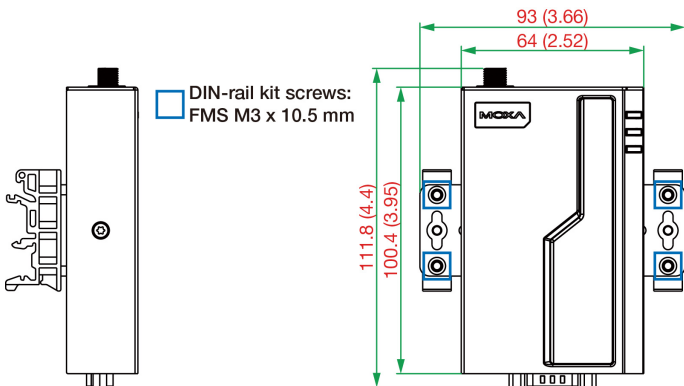
Wall Mounting



Wall-mount kit screws:
FMS M3 x 6 mm

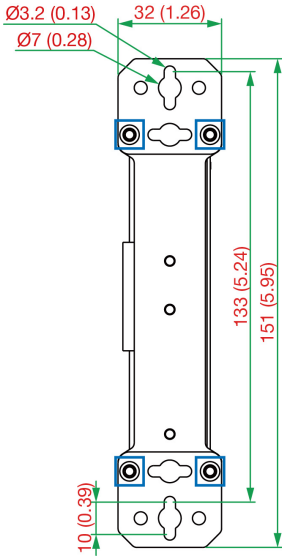
The screws for screwing
it to a wall:
FMS M3 x 5 mm (at least)

DIN-rail Mounting (plastic, needs to work with WK-32-01)

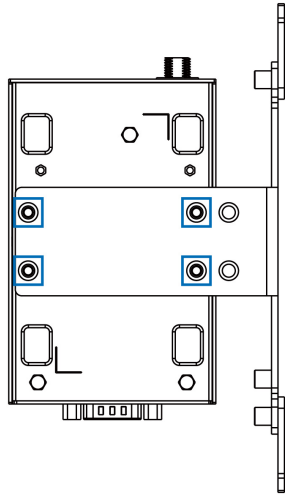


DIN-rail kit screws:
FMS M3 x 10.5 mm

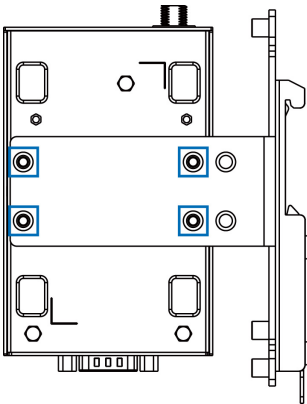
Side Mounting



□ Side-mount kit screws:
FMS M3 x 6 mm

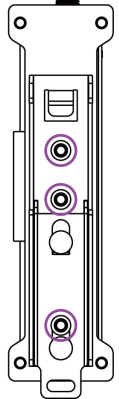


DIN-rail Mounting (metal) With Side-mounting Kit



□ Side-mount kit screws:
FMS M3 x 6 mm

○ DIN-rail mount kit
(metal) screws:
FMS M3 x 5 mm

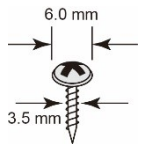


The mounting kit packages include screws. However, if you prefer to buy your own, refer to the dimensions below:

- Wall-mounting kit screws: FMS M3 x 6 mm
- DIN-rail mounting kit screws: FTS M3 x 10.5 mm
- Side-mounting kit screws: FMS M3 x 6 mm
- Metal DIN-rail kit screws (on side-mount kit): FMS M3 x 5 mm

For attaching the device server to a wall or the inside of a cabinet, we recommend using an M3 screw with the following specifications:

- The head of the screw should be between 4 and 6.5 mm in diameter.
- The shaft should be 3.5 mm in diameter.
- The length should be longer than 5 mm.



Product Specifications

USB Interface		
Standard	USB 3.2/2.0/1.1 compliant 5 Gbps (SuperSpeed USB), 480 Mbps (Hi-Speed USB) and 12 Mbps (Full-Speed USB)	
Upstream	1 USB port, Type B connector	
Downstream	2 serial ports, DB9 connectors	
Physical Characteristics		
Housing	Metal (SECC) + Aluminum	
Environmental Limits		
Operating Temperature	Standard Models: 0 to 60°C (32 to 140°F) Wide Temp. Models: -40 to 75°C (-40 to 167°F)	
Operating Humidity	5 to 95% RH (For use in Pollution Degree 2 environments)	
Storage Temperature	-40 to 75°C (-40 to 167°F)	
Power Requirements		
	USB 2.0 bus power (500 mA)	USB 3.2 bus power (900 mA)
UPort 1250-G2	✓	✓
UPort 1250I-G2	✓	✓
Power Consumption		
	5 V @ USB 2.0	5 V @ USB 3.2
UPort 1250-G2	160 mA	320 mA
UPort 1250I-G2	240 mA	400 mA
Regulatory Approvals		
EN IEC 61000-4-4, EN IEC 61000-4-5, EN IEC 61000-4-6, EN IEC 61000-4-8, EN IEC 61000-4-11, EN IEC 61000-6-2, EN IEC 61000-6-4 FCC Part 15B Class A, IEC/EN/UL 62368-1, LVD, KC		
Warranty		
Warranty Period	5 years	
Details	See www.moxa.com/warranty	

The latest specifications for Moxa's products can be found at <https://www.moxa.com>.

Certifications

CE Warning

This is a Class A product. In a domestic environment, this product may cause radio interference in which case the user may be required to take appropriate measures.

Federal Communications Commission Statement

FCC - This device complies with part 15 of the FCC Rules. Operation is subject to the following two conditions: (1) This device may not cause harmful interference, and (2) this device must accept any interference received, including interference that may cause undesired operation.

FCC Warning

This equipment has been tested and found to comply with the limits for a Class A digital device, pursuant to part 15 of the FCC Rules. These limits are designed to provide reasonable protection against harmful interference when the equipment is operated in a commercial environment. This equipment generates, uses, and can radiate radio frequency energy and, if not installed and used in accordance with the instruction manual, may cause harmful interference to radio communications. Operation of this equipment in a residential area is likely to cause harmful interference in which case the user will be required to correct the interference at his own expense.

KC Certification

사용자안내문 (User Guide)

이 기기는 업무용 환경에서 사용할 목적으로 적합성평가를 받은 기기로서 가정용 환경에서 사용하는 경우 전파간섭의 우려가 있습니다.

(This equipment has KC approval for use in industrial environments and could possibly interfere with household equipment.)

기 종별 Type of Equipment	사용자안내문 User Guide
<p>A 급 기기 (업무용 방송 통신기 자재)</p> <p>Class A Equipment (Broadcasting and Communication Equipment for Industrial and Commercial Use)</p>	<p>이 기기는 업무용 (A 급) 전자파 적합 기기로서 판매자 또는 사용자는 이 점을 주의하시기 바라며 가정 외의 지역에서 사용하는 것을 목적으로 합니다.</p> <p>This equipment is the EMC conformity equipment (Class A) for Industrial and Commercial Use. The seller or user should take note of this as this equipment can be used in places that exclude homes.</p>
<p>B 급 기기 (가정용 방송 통신 기자재)</p> <p>Class B Equipment (Broadcasting and Communication Equipment for Home Use)</p>	<p>이 지기는 가정용 (B 급) 전자파적합 기기로서 주로 가정에서 사용하는 것을 목적으로 하며, 모든 지역에서 사용할 수 있습니다.</p> <p>This equipment is the EMC conformity equipment (Class B) for Home Use and can be used mainly at homes, as well as in other areas.</p>