

Moxa IP Camera VPort 26A-1MP Series Quick Installation Guide

First Edition, March 2013

MOXA[®]

© 2013 Moxa Inc. All rights reserved.

P/N: 1802000261010

Overview

The VPort 26A-1MP series is a vandal-proof, IP66-rated, fixed dome IP camera designed for outdoor use. With HD (720P, 1280 x 720) resolution, H.264/MJPEG 3 simultaneous video streams, and day-and-night camera lens, the VPort 26A-1MP series is well-suited for outdoor video surveillance applications.

To enhance video image quality, the VPort 26A-1MP series is equipped with a 3 to 9 mm vari-focal megapixel lens that meets versatile viewing angle and distance requirements. With the built-in removable IR-cut filter (ICR), and automatic switching from color to B/W images, the VPort 26A-1MP series is suitable for day-and-night use. Along with the DNR (Digital Noise Reduction) function, which greatly reduces video frame noise, and WDR (Wide Dynamic Range), the VPort 26A-1MP series provides clear images under back light circumstances.

With the following features, the VPort 26A-1MP series is specially designed for outdoor applications: IP66 rain and dust protection, high EMI/surge protection, -40 to 50°C or -40 to 75°C (for T models) operating temperature without a fan or heater, metal housing, and vandal-proof dome cover. In addition, the camera has a built-in dehumidifying membrane for spreading out the moisture inside the camera. Users can choose either the model with the PoE (Power over Ethernet, 802.3af) function, or the wired power input model with 12/24 VDC or 24 VAC.

The VPort 26A-1MP series is designed to provide both H.264 and MJPEG video streams and to transmit up to 3 independent video streams (2 in H.264, and 1 in MJPEG) simultaneously. The camera can encode and transmit up to 30 FPS for each of the H.264 and MJPEG streams. In addition, Moxa’s DynaStream™ function changes the video frame rate automatically to help you control your network bandwidth budget and ease network system management. The CBR Pro™ function guarantees no packet loss in limited bandwidth transmissions, ensuring that images will not exhibit the mosaic effect. Advanced network security functions, such as 802.1x and SSH, are also provided to prevent unauthorized access or data hijacking, which is critical for most surveillance applications.

Package Checklist

Moxa’s VPort 26A-1MP is shipped with the following items. If any of these items is missing or damaged, please contact your customer service representative for assistance.

- VPort 26A-1MP (includes 2-pin terminal block for power input) or VPort P26A-1MP (PoE power input)
- Screw handle accessory package

Torx screw driver for attaching/detaching the upper case	4 sets of self-tapping screws (6 cm length) and anchors	9-pin terminal block for DI/Relay/Audio
		

- Cable glands accessories package

IP66 cable glands to ensure IP66 protection when the cables are connected



- Sticker for camera mounting positions



- Quick installation guide
- Documentation and Software CD (includes User's Manual, Quick Installation Guide, and VPort Utility)
- Warranty card

NOTE Check the model name on the VPort's side label to determine if the model name is correct for your order.

NOTE This product must be installed in compliance with your local laws and regulations.

Features

High Video Image Quality

- 1/2.7" progressive CMOS sensor for HD (1280 x 720) resolution
- Day and night viewing capability with ICR (IR cut filter) and color / black & white image switch
- Supports DNR (digital noise reduction), BLC (back level control), and WDR (wide dynamic range) for better image quality
- Equipped with 3 mm to 9 mm vari-focal megapixel lens for wide-range fields of view
- Minimum illumination up to 0.2 lux (color) and 0.05 lux (B/W) at F=1.2
- Image mirror and inverse
- 350° pan, 85° tilt, and 360° rotate camera head angles for different installation positions.
- Supports up to 3 privacy mask areas and 4X digital zoom

Excellent Video/Audio streaming and network transmission performance

- Up to 3 simultaneous video streams for H.264 and MJPEG codecs
- Video stream up to 30 frames/sec at WXGA (1280 x 800) resolution
- DynaStream™ supported for optimal network efficiency
- CBR Pro™ supported for high image quality in limited bandwidth transmissions

- Video latency under 200 ms
- 1 audio input and 1 audio output supported for complete video/audio surveillance solution
- WXGA/HD/SVGA/Full D1/ 4CIF/ VGA/ CIF/ QCIF resolution
- TCP, UDP, and HTTP network transmission mode
- Supports RTSP streaming
- Supports IGMP (ver.3) protocols for efficient network transmission
- Supports SNMP (V1/V2C/V3) for network system integration and management
- Supports QoS (ToS) for transmission priority
- Adjustable frame rate and bit rate control
- User-friendly IP filtering
- Supports IEEE802.1X for network access authentications
- Supports HTTPS and SSH for network transmission security
- UPnP Supported
- Up to 5 unicast video streams, and 50 multicast clients
- Supports multicast push for all multicast clients
- OnVIF standard supported for compatibility with other IP video products
- Modbus/TCP supported for direct communication with SCADA system

Rugged Design for Mission-critical Industrial Environments

- IP66 form factor protection for rain and dust
- Model available with PoE (802.3af) or 12/24 VDC and 24 VAC power input, with LED indicators
- Panel mounting for mounting on a ceiling, or outdoor installation kit for versatile installation method
- -40 to 50°C or -40 to 75°C (T model) operating temperature for critical industrial environments
- No heater or fan for long MTBF
- CE, FCC, UL60950-1
- 5-year product warranty

Intelligent Alarm Triggering Capability

- Built-in tamper alarm, and VMD (video motion detection)
- 1 DI and 1 relay output (DO) for sensors and alarms
- Supports video loss alarm
- Pre, trigger, and post snapshot images supported
- 24 MB video buffer for pre-event snapshot images
- Sequential snapshot images supported
- Supports SDHC slot for local storage with SD card in event recording
- Supports SMTP and FTP for alarm message transmission
- Supports HTTP event server

Video management and control

- Support for Moxa SoftNVR-IA IP surveillance software, a video recording and management solution
- Free: Moxa VPort SDK Plus with CGI Commands, ActiveX Control, and API support for third-party developers
- ONVIF conformity for standardization and interoperability

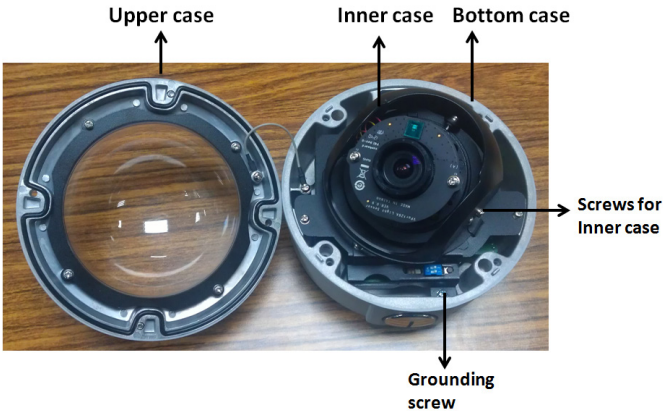
NOTE For models VPort 26A-1MP and VPort 26A-1MP-T, the direct power input is 12-24 VDC, 500 mA or 24 VAC, 50/60 Hz, 5.5 W. For models VPort P26A-1MP and VPort P26A-1MP-T, the power input is PoE (802.3af), 48 VDC, 180 mA.

NOTE If you are interested in the Moxa VPort SDK PLUS, please go to Moxa's website (www.moxa.com) to download the software, or contact a Moxa sales representative for more information.

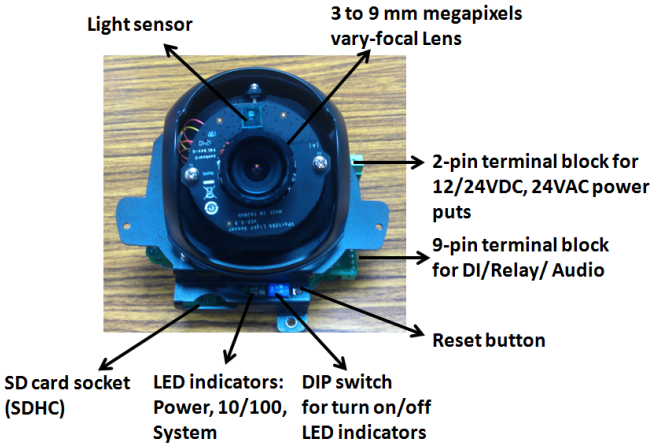
NOTE If you are interested in Moxa's SoftNVR-IA IP surveillance software, please go to Moxa's website (www.moxa.com) to download the trial version.

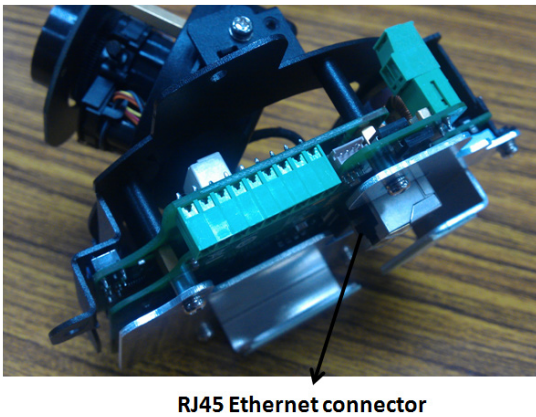
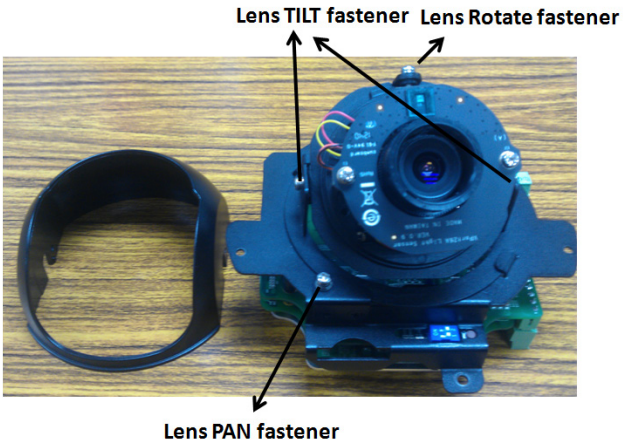
VPort 26A-1MP Product Description

Form Factor



IP Camera Module





Vari-focal Lens

The VPort 26A-1MP series comes with a day and night 3 to 9 mm megapixel vari-focal lens for providing high quality video images. Users can adjust the Zoom and Focus manually to get clear images regardless of the site environment.



NOTE To tune the focus position, loosen the screw, and then turn the lens head.

Pan, Rotation, and Tilt Adjustment

Use the pan, rotation, and tilt fasteners for panning, rotating, and tilting the lens angles. To do this, the screws must be loosened in advance. After the lens angles are correct, tighten the screws to fix the angles.

Light Sensor

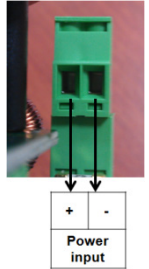
The VPort 26A-1MP includes a light sensor for detecting illumination, which is for enabling the ICR (IR-cut filter removable) function. When the illumination is under 3 lux, the image will be switched to night mode in black and white, and when the illumination is greater than 5 lux, the image will be switched back to day mode in color.

2-pin Terminal Blocks for Power Input

The VPort 26A-1MP series comes in two models:

- VPort 26A-1MP: 12/24 VDC or 24 VAC power inputs
- VPort P26A-1MP: powered with PoE (Power over Ethernet, 802.3af)

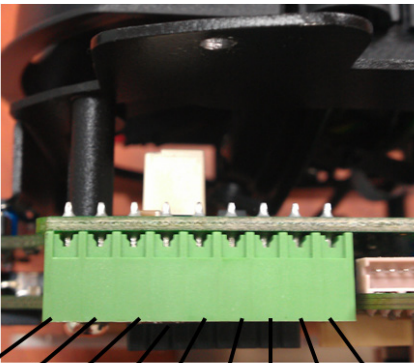
Note: The 2-pin terminal block shown here is for the direct-wired power input of the VPort 26A-1MP.



NOTE The specifications of the direct-wired power input are 12-32 VDC for 12/24 VDC power input, or 18-30 VAC for 24 VAC power input. The maximum power consumption is 5.5 watts.

9-pin Terminal Block Connector for DI, DO, and Audio

The VPort 26A-1MP supports 1 DI (digital input), 1 DO (relay output), 1 audio input (line-in or mic-in), and 1 audio output (line-out) through the 9-pin terminal block.

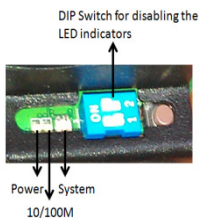


NO	C	NC	-	+	+	-	-	+
DO (Relay)			DI		Audio out		Audio input	

DO (Relay Output)	NO (Normal Open)	Max. 1A, 24 VDC Initial status is Normal Open
	C (Common)	
	NC (Normal Close)	
DI (Digital Input)	+	Low: +13 V to +30 V
	-	High: -30 V to +3 V

LED Indicators and DIP Switches

The VPort 26A-1MP has 3 LEDs for indicating the power status, 10/100 Mbps Ethernet link, and system status. In addition, one DIP switch (No.2) is provided for enabling or disabling the LED light for users who do not want the LED light to be visible at night.



LED	Description	
Power	On: power on Off: power off	
10/100M	Amber: Ethernet link is 10 Mbps Green: Ethernet link is 100 Mbps	
System	Red On	Hardware initialization
	Red blinking	Software initialization
	Green On	System boot-up successfully
	Green blinking	Firmware upgrade proceeding
DIP Switch 1	Reserved	
DIP Switch 2	On: LED light is on Off: LED light is off	

SD card Socket (SDHC)

The VPort 26A-1MP supports a standard SDHC interface for local storage with a current maximum size of 32 GB. Any SD card that fits this specification can be used. Currently, the local storage supports triggered video recordings when an event has occurred.

NOTE We recommend using Transcend or Sandisk SD cards. Sandisk Extreme III SD cards are highly recommended due their superior read/write speed.

NOTE To check if the SD card is mounted successfully, go to **system configuration** → **Local storage** in the VPort's web-based manager.

Reset Button

The reset button is used to reset the camera's hardware.

1. Reboot:

To reboot the VPort 26A-1MP, power it off and then power it back on again, or push the RESET button one time. The System LED will light in red as the POST (Power on Self Test) process runs. When the rebooting process is finished, the System LED will change to a green color.

2. Restore to Factory Settings:

To restore the VPort 26A-1MP to the factory default settings, press the reset button continuously until the System LED blinks in red. After the system LED stops blinking, release the reset button. The POST process will run, and the VPort will reboot. The System LED will light in green when the VPort has finished rebooting.

RJ45 Ethernet Port

The RJ45 Ethernet port is for 10/100 Mbps network transmission, and the PoE (Power-over-Ethernet, 802.3af) power supply for the VPort P26A-1MP.

NOTE The VPort P26A-1MP supports standard IEEE 802.3af Power-over-Ethernet (PoE). The maximum power consumption is about 5.8 watts.

NOTE The equipment is designed for in-building installation only, and is not intended to be connected to exposed (outdoor) networks.

First-Time Installation and Configuration

Before installing the VPort 26A-1MP, check to make sure that all items listed in the Package Checklist are in the box. In addition, you will need access to a notebook computer or PC equipped with an Ethernet port.

Hardware Installation

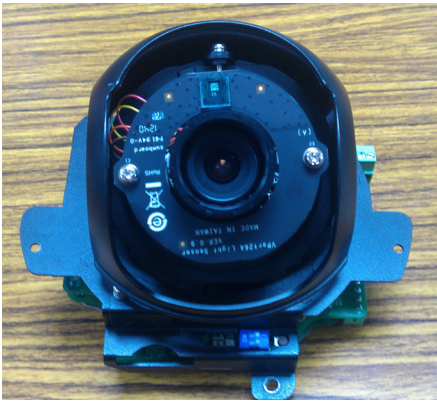
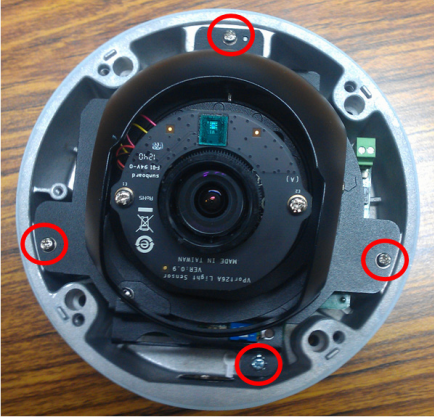
Step 1: Open and remove the upper case.

Use the Security Torx to loosen the upper case screws.



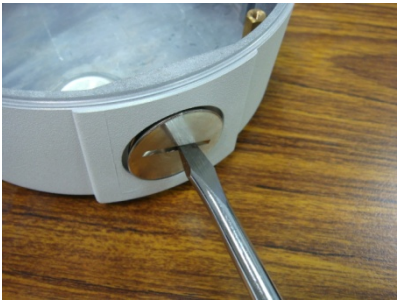
Step 2: Remove the inner case.

Loosen the 4 screws, and then take out the IP camera module.



Step 3: Connect the cables.

a) Open the conduit hole (the side conduit hole is shown in the figure)



b) Prepare the cable gland (if required).



C) Use the cable gland to assemble the cables.

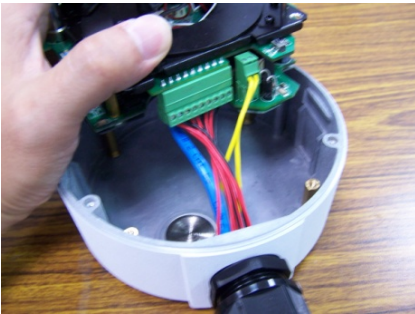
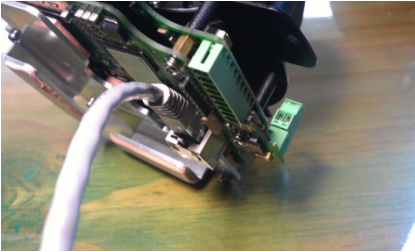


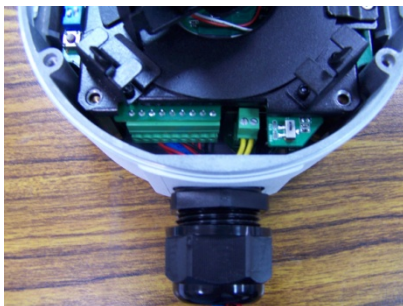
NOTE When installing the cable gland, make sure the 2 rubber rings are assembled properly for IP66 protection. If necessary, use silicon sealant.



d) Connect the cables to the IP camera module's connectors.

Connect the Ethernet cable to the RJ45 Ethernet port, and connect the terminal blocks to the power line and DI/DO/Audio lines (if used).





NOTE Arrange the cables carefully to make sure that all cables are connected properly. We recommend connecting the Ethernet cable first, and then the 9-pin terminal block. Connect the 2-pin terminal block last.

NOTE The conduit hole must face downward to provide the VPort 26A-1MP with IP66 protection against rain when installed in an outdoor environment.

Step 4: Mount the bottom case on the ceiling or mounting kit accessory (VP-MK2).

a) Mounting on a ceiling

Step 1: Use the installation stick or attach the bottom case to the appropriate mounting location on the wall; mark the positions of the four screw holes with a pen or a pencil.

Step 2: In the marked locations, drill holes slightly smaller than the supplied screw anchors.

Step3: Pound the anchors into these drilled holes.

Step 4: Fasten the bottom case with the four copper pillar screws.





b) Using the mounting kit accessory (VP-MK2)

Step 1: Use the four machine screws, which are provided in the VP-MK2 accessory package, to fasten the bottom of the case to the plate.



Step 2: Assemble the mounting kit with the selected accessory.

VPort 26A-1MP + VP-MK2 + VP-520L	VPort 26A-1MP + VP-MK2 + VP-520HB
	

NOTE Choose the appropriate mounting accessories based on the installation requirements.

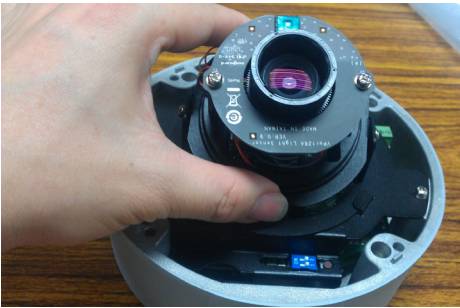
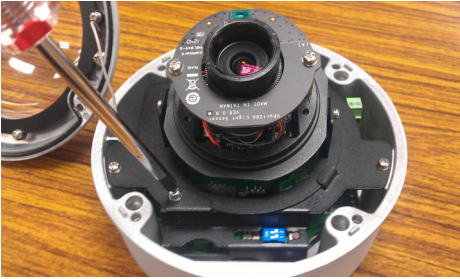
Step 5: Assemble the IP Camera Module with the bottom case.



Step 6: To get the desired video image, adjust the angles and zoom strength.

Take out the inner case after loosening the 2 screws for the inner case

a) Pan adjustment



b) Tilt adjustment



c) Rotate adjustment



NOTE Do not grasp the lens when rotating the camera. Instead, hold the two copper cylinders.

NOTE After adjusting the PAN, TILT, and ROTATE positions, tighten all of the screws to ensure that the orientation of the camera does not change.

d) Zoom and Focus adjustment



To adjust the Zoom and Focus positions, connect to the camera's web console first so that you can view a live video feed. Next, loosen the screws for both the zoom and focus positions, and then rotate the lens to focus on the desired image. Finally, tighten both screws.

NOTE To adjust the focus position, loosen the appropriate screw and then rotate the lens head.

Step 8: Fasten the upper case to the bottom case to complete the hardware installation.

Software Installation


Step 1: Configure the VPort 26A-1MP's IP address

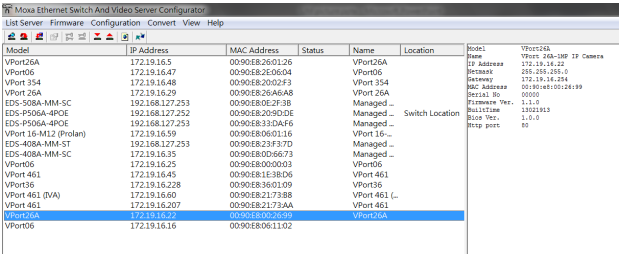
When the VPort 26A-1MP is first powered on, the POST (Power On Self Test) will run for a few moments. The System LED will turn green when the POST is complete. The 10 Mbps or 100 Mbps LED will then flash as the IP address is assigned. The network environment determines how the IP address is assigned.

Network Environment with DHCP Server

For this network environment, the unit's IP address will be assigned by the network's DHCP server. Refer to the DHCP server's IP address table to determine the unit's assigned IP address. You may also use the Moxa VPort and EtherDevice Configurator Utility (edscfgui.exe), as described below:

Using the Moxa VPort and EtherDevice Configurator Utility (edscfgui.exe)

1. Run the **edscfgui.exe** program to search for the VPort. After the utility's window opens, you may click on the **Search** button  to initiate a search.
2. When the search has concluded, the Model Name, MAC address, IP address, serial port, and HTTP port of the VPort will be listed in the utility's window.



Model	IP Address	MAC Address	Status	Name	Location	Model Name	VPort 26A-1MP IP Camera
VPort26A	172.19.16.5	0090E8260126		VPort26A		IP Address	172.19.16.22
VPort06	172.19.16.47	0090E82E0604		VPort06		Netmask	255.255.255.0
VPort 354	172.19.16.48	0090E82002F3		VPort 354		Gateway	172.19.16.254
VPort 26A	172.19.16.29	0090E826A6A8		VPort 26A		MAC Address	00:90:e8:00:26:19
EDS-508A-MM-SC	192.168.127.253	0090E80E2F38	Managed ...			Serial No	00000
EDS-P506A-4POE	192.168.127.252	0090E82090D6	Managed ...		Switch Location	Firmware Ver.	1.11.0
EDS-P506A-4POE	192.168.127.253	0090E833DAF6	Managed ...			BuildTime	19031913
VPort 16-M12 (Prolan)	172.19.16.59	0090E8060116	Managed ...	VPort 16...		Bios Ver.	1.0.0
EDS-408A-MM-ST	192.168.127.253	0090E823F37D	Managed ...			Http port	80
EDS-408A-MM-SC	172.19.16.35	0090E80D6673	Managed ...				
VPort06	172.19.16.25	0090E8000003		VPort06			
VPort 461	172.19.16.45	0090E81E38D6		VPort 461			
VPort36	172.19.16.228	0090E8360109		VPort36			
VPort 461 (IVA)	172.19.16.60	0090E8217388		VPort 461 (-			
VPort 461	172.19.16.207	0090E82173AA		VPort 461			
VPort26A	172.19.16.22	0090E8002699		VPort26A			
VPort06	172.19.16.16	0090E8061102					

NOTE The **Serial** number is the production serial number of this VPort, and the **HTTP Port** number is the http port used by this VPort.

3. Users can double click the selected VPort, or use the IE web browser to access the VPort's web-based manager (web server).

Non DHCP Server Network Environment

If your VPort 26A-1MP is connected to a network that does not have a DHCP server, then you will need to configure the IP address manually. The default IP address of the VPort 26A-1MP is 192.168.127.100 and the default subnet mask is 255.255.255.0. Note that you may need to change your computer's IP address and subnet mask so that the computer is on the same subnet as the VPort.

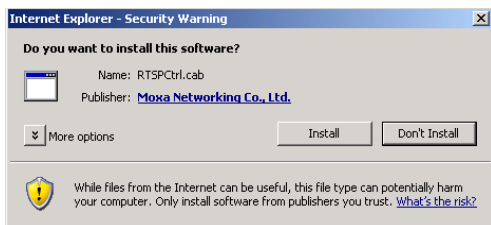
To change the IP address of the VPort manually, access the VPort's web server, and then navigate to the **System Configuration** → **Network** → **General** page to configure the IP address and other network settings. Check the **Use fixed IP address** to ensure that the IP address you assign is not deleted each time the VPort is restarted.

Step 2: Accessing the VPort 26A-1MP's web-based manager

Type the IP address in the web browser's address input box and then press enter.

Step 3: Install the ActiveX Control Plug-in

A security warning message will appear the first time you access the VPort's web-based manager. The message is related to installing the VPort ActiveX Control component on your PC or notebook. Click **Yes** to install this plug-in to enable the IE web browser for viewing video images.

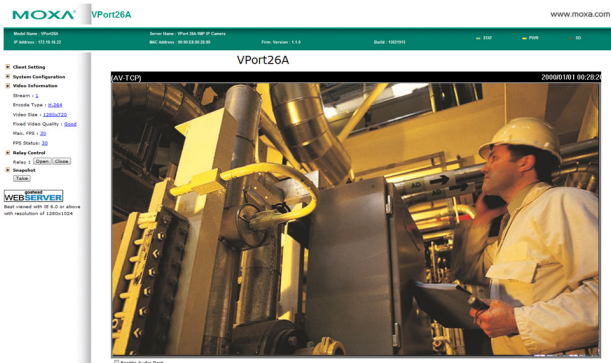


NOTE For Windows XP SP2 or above operating systems, the ActiveX Control component will be blocked for system security reasons. In this case, the VPort's security warning message window may not appear. Users should unlock the ActiveX control blocked function or disable the security configuration to enable the installation of the VPort's ActiveX Control component.

Step 4: Access the homepage of VPort 26A-1MP's web-based manager.

After installing the ActiveX Control component, the homepage of the VPort 26A-1MP's web-based manager will appear. Check the following items to make sure the system was installed properly:

1. Video Images
2. Audio Sound (make sure your PC's or notebook's sound is turned on)
3. Video Information



Step 5: Access VPort's system configuration.

Click on **System Configuration** to access the overview of the system configuration to change the configuration. **Model Name**, **Server Name**, **IP Address**, **MAC Address**, **Firmware Version**, and **LED Status**

appear in the green bar near the top of the page. Use this information to check the system information and installation.

For details of each configuration, check the User's Manual on the software CD.

MOXA

VPort26A

www.moxa.com

Model Name: VPort26A Server Name: VPort26A MP of Camera IP Address: 172.16.16.12 MAC Address: 00-10-10-00-30-30 Firm. Version: 1.1.0 Build: 1307043

System Configuration

Welcome to the System Configuration pages. A brief description of each configuration group is given below. Click on a plus sign in the left pane to expand a group, and then click on the name of the page you would like to open.

Category	Item	Description and Content
System	General	Setting host Name and Date/Time
	Account	Administration, User, and Device Account Privileges Management
	Local Storage	Set up the local storage capability
	System Log	System Log and operation information
	System Parameter	System parameter information and Import/Export function
	Firmware Upgrade	Remote Firmware Upgrade
	Factory Default	Reset to Factory Default
	Reboot	Device will reboot for restoring system
	General	The IP network settings of this device
	SMTP Server	Set up Primary and Secondary SMTP Server and E-mail accounts
Network	DDNS	Configure DDNS
	Universal PnP	Enable UPnP function
	ToS	Configure ToS(Type of Service)
	FTP Server	Set up the Primary and Secondary FTP Server
	Multicast	Set up Multicast (IGMP) Streaming
	HTTP Event Server	Set up the HTTP Event Server to send the event alarm action
	Accessible IP	Set up a list to control the access permission of clients by checking their IP address
	SNMP	Configure the SNMP settings
	Webbox/TCP	Enable Webbox/TCP function
	RTSP	Configure RTSP URL
Video	Tabnet	Configure Tabnet
	LDAP	Configure LDAP
	Image Settings	Configure the information of video image
	Camera Tuning	Configure the attributes of video image
	ROI	Configure the ROI(region of interest) settings
	Privacy Mask	Configure the Privacy Mask settings
	Camera Modulation	Reset the camera's modulation (NTSC or PAL)
	Video Performance	Set up the Profile Standard(MJPEG or H.264), Size (Resolution), FPS and Video Quality
	FPS	Configure the Digital FPS settings
	DynaStream	Reset
Conditions		Configure the DynaStream trigger conditions settings
Link		Configure the Link settings
Alarm	Basic Setting	General settings of event alarm
	Schedule	Set up the Alarm schedule
	Digital Input	Configure the Digital Input Alarm
	Motion Detection	Configure the Motion Detection Alarm
Event Alarm	OSD Event	Configure the OSD event Alarm
	Camera Tamper Event	Configure the Camera Tamper event Alarm

Wiring Requirements



ATTENTION

Safety First!

Be sure to disconnect the power cord before installing and/or wiring your Moxa VPort 26A-1MP.

Calculate the maximum possible current in each power wire and common wire, and observe all electrical codes dictating the maximum current allowable for each wire size.

If the current goes above the maximum ratings, the wiring could overheat, causing serious damage to your equipment.

You should also pay attention to the following:

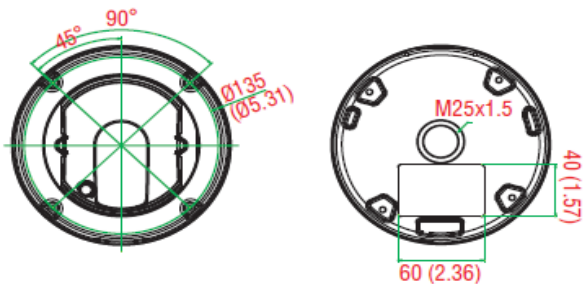
- Use separate paths to route wiring for power and devices. If power wiring and device wiring paths must cross, make sure the wires are perpendicular at the intersection point.
- You can use the type of signal transmitted through a wire to determine which wires should be kept separate. The rule of thumb is that wiring that shares similar electrical characteristics can be bundled together.
- Keep input wiring and output wiring separated.
- We strongly advise labeling the wiring to all devices in the system when appropriate.



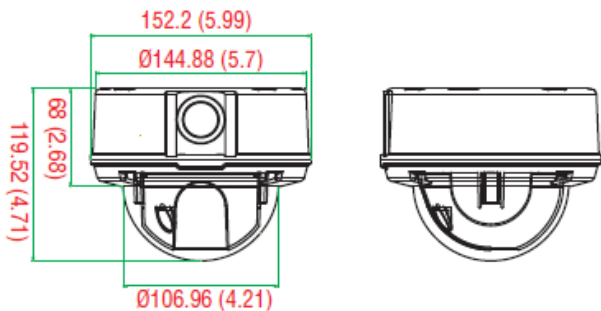
WARNING

This equipment is intended to be used in a Restricted Access Location.

Dimensions



Top View



Side View

Specifications

Camera	
Sensor	1/2.7" HD progressive scan CMOS
Lens	Focal length = 3 to 9 mm, F = 1.2 Horizontal: 121.2° to 38.1° Vertical: 62.1° to 21.3° Diagonal: 148.4° to 43.8°
Auto Iris type	DC drive
Camera Angle	Pan: $\pm 175^\circ$; Tilt: 0 to 85°; Rotation: $\pm 180^\circ$
Minimum illumination (low light sensitivity)	Color: 0.2 lux at F1.2 B/W: 0.05 lux at F1.2
Synchronization	Internal
White Balance	ATW/AWB (range: 3200 to 10000°K)
Dynamic Range	Color: 100 db B/W: 110 db
Electronic Shutter	Auto, 1/30 to 1/25,000 sec.
ICR Control	Auto
S/N Ratio	50 dB (Gamma, Aperture, AGC OFF, DNR ON)
DNR	Built-in DNR (digital noise reduction)
WDR	Level 1-8/ off
AGC Control	2X, 4X, 8X, 16X, 32X, 64X
Flickerless control	Indoor/Outdoor modes
Back level control	High, Medium, Low

Auto exposure	Level ± 5			
Digital Zoom	4X			
Image Rotation:	Flip, Mirror, and 180° rotation			
Image Setting	Manual tuning with saturation, sharpness, and contrast			
Video				
Video Compression	H.264 (ISO/IEC 14496-10) or MJPEG			
Video Output	Via Ethernet port			
Video Streams	Maximum of 3 video streams (2 x H.264, 1 x MJPEG)			
Video Resolution and FPS (frames per second):				
	NTSC		PAL	
	Size	Max. FPS	Size	Max. FPS
QCIF	176 x 112	30	176 x 144	25
CIF	352 x 240	30	352 x 288	25
VGA	640 x 480	30	640 x 480	25
4CIF	704 x 480	30	704 x 576	25
Full D1	720 x 480	30	720 x 576	25
SVGA	800 x 600	30	800 x 600	25
HD	1280 x 720	30	1280 x 720	25
WXGA	1280 x 800	30	1280 x 800	25
Video Viewing	<ul style="list-style-type: none"> • DynaStream™ supported for changing the video frame rate automatically • CBR Pro™ for good image quality in limited bandwidth transmission • 3 privacy mask areas provided • Adjustable image size and quality • Timestamp and text overlay • Maximum of 5 simultaneous unicast connections • ROI (Region of Interest) configuration for up to 3 areas 			
PTZ	Digital PTZ with 4X zoom			
Audio				
Audio Input	1 Line-in or MIC-in with 2-pin terminal block connector			
Audio Output	1 Line out with 2-pin terminal block connector			
Network				
Protocols	TCP, UDP, HTTP, SMTP, FTP, Telnet, NTP, DNS, DHCP, UPnP, RTP, RTSP, ICMP, IGMPv3, QoS, SNMPv1/v2c/v3, DDNS, Modbus/TCP, 802.1X, SSH/HTTPS			
Ethernet	1 10/100BaseT(X) Ethernet port, RJ45 connector			
GPIO				
Digital Inputs	1, 8 mA "Low": +13 V to +30 V "High": -30 V to +3 V			
Relay Output	1 (max. 24 VDC @ 1 A)			
LED Indicators				
Network	10 Mbps or 100 Mbps			
Power	Power On/Off			
System	Indicates if the system booted properly or not			
DIP Switch	For turning the LED light ON or Off			

Power	
Input	VPort 26A-1MP: 1, 12/24 VDC or 24 VAC with 2-pin terminal block connector VPort P26A-1MP: 1, Power-over-Ethernet (IEEE802.3af)
Consumption	<ul style="list-style-type: none"> VPort 26A-1MP: 4.7 W VPort P26A-1MP: 5.8 W
Local storage	
SD Socket	Standard SD socket (SDHC)
Physical Properties	
Housing	Metal, IP66 rated for rain and dust protection, vandal-resistant
Dimensions	Diameter: 149 mm (5.7 in) Height: 120 mm (4.7 in)
Weight	1.4 kg (0.64 lb)
Installation	Surface mounting, or outdoor mounting with accessories
Environmental Limits	
Operating Temperature	Standard models: -40 to 50°C (-40 to 122°F) Wide temp. models: -40 to 75°C (-40 to 167°F)
Storage Temperature	-40 to 85°C (-40 to 185°F)
Ambient Relative Humidity	5 to 95% (non-condensing)
Regulatory Approvals	
UL	UL 60950-1
EMI	FCC Part 15, CISPR (EN55022) class A
EMS	EN61000-4-2 (ESD), Level 3 EN61000-4-3 (RS), Level 3 EN61000-4-4 (EFT), Level 3 EN61000-4-5 (Surge), Level 3 EN61000-4-6 (CS), Level 3 EN61000-4-8 EN61000-4-11
Shock	IEC60068-2-27
Freefall	IEC60068-2-32
Vibration	IEC60068-2-6
Vandal-resistant	EN 62262, IK10 level
Warranty	5 years
MTBF (mean time between failures)	
Time	201,721 hrs
Database	Telcordia (Bellcore), 25°C
Alarm Features	
<ul style="list-style-type: none"> Intelligent Video: Camera tamper Video motion detection with sensitivity tuning Video loss alarm Daily repeat timing schedule JPEG snapshots for pre/trigger/post alarm images Automatic transfer of stored images via email or FTP as event-triggered actions HTTP event servers and CGI events for setting customized alarm actions 24 MB pre-alarm video buffer for JPEG snapshot images 	

Security	
<ul style="list-style-type: none"> • User level password protection • IP address filtering • 802.1X authentication • HTTPS, SSH encryption 	
Minimum Viewing System Requirements	
<ul style="list-style-type: none"> • Pentium 4, 2.4 GHz • 512 MB of memory • Windows XP/2000 with SP4 or above • Internet Explorer 6.x or above • DirectX 9.0c or above 	
Software Development Kit	
VPort SDK PLUS	Includes CGI commands, ActiveX Control, and API library for customized applications or system integration for third-party developers (the latest version of SDK is available for download from Moxa's website).
Standard	ONVIF

Technical Support Contact Information
www.moxa.com/support

Moxa Americas:

Toll-free: 1-888-669-2872

Tel: 1-714-528-6777

Fax: 1-714-528-6778

Moxa China (Shanghai office):

Tel: +86-21-5258-9955

Fax: +86-21-5258-5505

Moxa Europe:

Tel: +49-89-3 70 03 99-0

Fax: +49-89-3 70 03 99-99

Moxa Asia-Pacific:

Tel: +886-2-8919-1230

Fax: +886-2-8919-1231