

# DA-685 Windows Embedded Standard 7 Software Manual

---

First Edition, February 2014

[www.moxa.com/product](http://www.moxa.com/product)

**MOXA**<sup>®</sup>

© 2014 Moxa Inc. All rights reserved.

# DA-685 Windows Embedded Standard 7 Software Manual

The software described in this manual is furnished under a license agreement and may be used only in accordance with the terms of that agreement.

## Copyright Notice

© 2014 Moxa Inc. All rights reserved.

## Trademarks

The MOXA logo is a registered trademark of Moxa Inc.  
All other trademarks or registered marks in this manual belong to their respective manufacturers.

## Disclaimer

Information in this document is subject to change without notice and does not represent a commitment on the part of Moxa.

Moxa provides this document as is, without warranty of any kind, either expressed or implied, including, but not limited to, its particular purpose. Moxa reserves the right to make improvements and/or changes to this manual, or to the products and/or the programs described in this manual, at any time.

Information provided in this manual is intended to be accurate and reliable. However, Moxa assumes no responsibility for its use, or for any infringements on the rights of third parties that may result from its use.

This product might include unintentional technical or typographical errors. Changes are periodically made to the information herein to correct such errors, and these changes are incorporated into new editions of the publication.

## Technical Support Contact Information

[www.moxa.com/support](http://www.moxa.com/support)

### Moxa Americas

Toll-free: 1-888-669-2872

Tel: +1-714-528-6777

Fax: +1-714-528-6778

### Moxa Europe

Tel: +49-89-3 70 03 99-0

Fax: +49-89-3 70 03 99-99

### Moxa India

Tel: +91-80-4172-9088

Fax: +91-80-4132-1045

### Moxa China (Shanghai office)

Toll-free: 800-820-5036

Tel: +86-21-5258-9955

Fax: +86-21-5258-5505

### Moxa Asia-Pacific

Tel: +886-2-8919-1230

Fax: +886-2-8919-1231

# Table of Contents

<b>1. Introduction</b> .....	<b>1-1</b>
Software Components .....	1-2
<b>2. System Initialization</b> .....	<b>2-1</b>
Create a New User Account.....	2-2
<b>3. Enabling Embedded Filters</b> .....	<b>3-1</b>
Enhanced Write Filter .....	3-2
Overview.....	3-2
Enabling Enhanced Write Filter.....	3-3
File-Based Write Filter .....	3-5
Overview.....	3-5
Configuring File-Based Write Filter.....	3-6
<b>4. Serial Port Configuration</b> .....	<b>4-1</b>
Serial Port Configuration.....	4-2
<b>5. Customizable Sample Code</b> .....	<b>5-1</b>
Sample Code for Customizing the DA-685.....	5-2
The DIO Control Walkthrough .....	5-2
The LED Control Walkthrough .....	5-3
Watchdog Control Code .....	5-3
The Watchdog Control Code Walkthrough.....	5-4
<b>6. System Recovery</b> .....	<b>6-1</b>
Overview: Setting Up the Recovery Environment.....	6-2
Step 1: Prepare the USB drive.....	6-2
Step 2: Setting the BIOS to Boot via USB .....	6-3
Step 3 (opt.): Create a Custom System Image.....	6-4
Step 4: Reset BIOS to Original State.....	6-7
Step 5: Perform a Test Restoration .....	6-8
<b>A. Sample Code for DA-685 Customization</b> .....	<b>A-1</b>
The DIO Control Sample Code.....	A-2
The LED Control Sample Code .....	A-4
The Watchdog Control Sample Code.....	A-6

# 1

## Introduction

---

Thank you for buying Moxa's DA-685 rackmount computer. This model comes with the Windows 7 Embedded software platform, providing a simple and familiar development environment for on-board train applications.

### □ **Software Components**

# Software Components

Refer to the following content for the software components of the Windows Embedded Standard 7 pre-installed on the DA-685 computers.

## Windows Embedded Standard 7

### Core OS:

- 32-bit support
- Remote Client
- Remote Procedure Call

### Applications and Services Development:

- .Net Framework 3.5
- Remote Desktop Protocol 7.1
- COM OLE Application Support
- COM+ Application Support
- MSMQ

### Internet Services:

- Internet Explorer 8.0
- IIS 7.0

### File Systems and Data Store:

- Windows Data Access Components
- Windows Backup and Restore

### Diagnostics:

- Common Diagnostic Tools
- Problem Reports and Solutions

**Fonts:** Chinese (Trad. and Simp.), Japanese, Korean, Western, Middle Eastern, South East Asian, and South Asian Fonts

### Graphics and Multimedia:

- MPEG DTV-DVD Audio Decoder (MPEG-2, AAC)
- MPEG Layer-3 Audio Codecs(MP3)
- MPEG4 Decoders
- Windows Media Video VC-1 (WMV) Codecs
- DirectX and Windows Device Experience
- Windows Media Player 12

### International:

- IME Simplified Chinese Support
- IME Traditional Chinese Support
- IME Japanese Support
- IME Korean Support

### Management:

- Group Policy Management
- Windows Management Instrument (WMI)
- Windows Update

### Networking:

- Extensible Authentication Protocol (EAP)
- Internet Authentication Service
- Telnet Server
- Bluetooth
- Domain Services
- Network Access Protection
- Network and Sharing Center
- Quality of Service
- Remote Access Service (RAS)
- Telephony API Client
- Windows Firewall
- Wireless Networking

### Security:

- Credential Roaming Service
- Credentials and Certificate Management
- Windows Authorization Manager (AZMAN)
- Windows Security Center
- Active Directory Rights Management
- Security Base
- Encrypted File System (EFS)

### Embedded Features:

- Enhanced Write Filter (EWF)
- File-Based Write Filter (FBWF)
- Message Box Default Reply
- Registry Filter
- WSDAPI for .NET

### Embedded Self-Health Diagnostic Software:

SNMP-based remote scripting layer for monitoring, reporting, and control

## System Initialization

---

This chapter describes how to initialize your system after booting into your DA-685 computer for the first time.

The following topics are covered in this chapter:

- ❑ **Create a New User Account**

# Create a New User Account

1. When you boot into the DA-685 for the first time you will need to create a user account for this computer.
2. Type the password, and then verify it by retyping the password in the dialog just below. In addition, you may also set a password hint in case you forget your password. If you do not want to set a password for the account, leave the entry box blank and click **Next**.

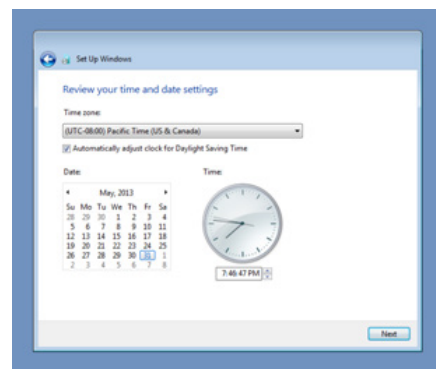
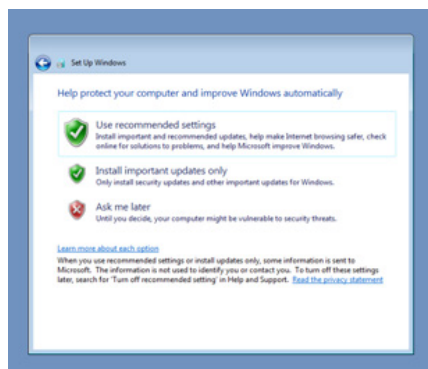


## ATTENTION

Remember to use a strong password, preferably one that is at least eight characters long, is not a proper word, and contains numbers, letters, and symbols.



1. Select the **Windows Update** option, and then set your time zone and whether you will use daylight savings time.



2. Now you can start to use DA-685 embedded computer.

## Enabling Embedded Filters

---

This chapter describes how to set up and configure Windows 7 bit-level and file-level write protections on the DA-685 storage drives.

The following topics are covered in this chapter:

### □ **Enhanced Write Filter**

- Overview
- Enabling Enhanced Write Filter
- Committing Data and/or Disabling EWF

### □ **File-Based Write Filter**

- Overview
- Configuring File-Based Write Filter
- Excluding Files from FBWF Protection
- Committing Cached FBWF Content to Permanent Storage

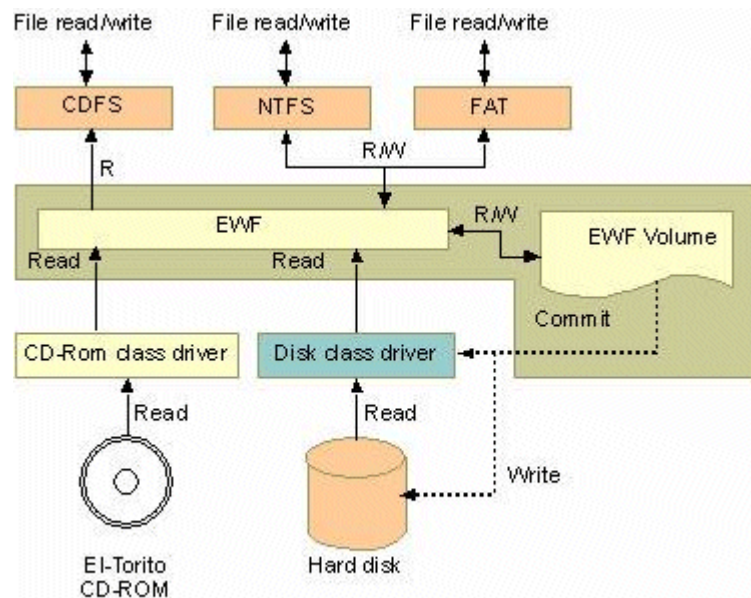


# Enhanced Write Filter

## Overview

Enhanced Write Filter (EWF) provides a means for protecting a volume from unauthorized writes by making the main OS drive a write-protected volume, effectively making the system a read-only system for most users. This gives much stronger protection against malicious computer code like trojans, worms, and viruses.

**Enhanced Write Filter** (EWF) allows Windows 7 users to protect their all information on their storage drive from permanent changes of any sort, at the lowest level of hardware protection available: the bit level. **EWF** allows the operating system (OS) to boot from the hard disk, but protects the system by creating a virtual file system called an **overlay**. All writes to an EWF-protected volume (the **hard disk**, in Fig. 1) are only recorded on this virtual overlay (the **EWF Volume**, in Fig. 1), which is stored independently in random access memory (RAM). Because EWF does not write data directly to the hard disk but instead only records system writes to this virtual RAM overlay, any data that is "written" during system operation will disappear upon the next re-boot. This approach allows the system to operate as if it is writeable when in reality all OS and user-space file systems are stored in a permanent, read-only state. If desired, the data written to the overlay may be committed to the protected volume, but this requires additional setup and permissions that can only be granted by the administrator. Refer to the following figure (from Microsoft) for an overview of the EWF structure.



To get more details about EWF configuration and usage, you may:

- Visit Microsoft's [EWF Volume Configuration](#) help pages.
- Visit Microsoft's [EWF overview](#) on the official Microsoft EWF help pages.
- Visit Microsoft's detailed description of [EWF modes](#) on the EWF help pages.
- Visit Microsoft's detailed description of the [EWF API](#).

For the EWF commands, refer to the MSDN web site:

<http://msdn.microsoft.com/en-us/library/ms940853%28v=winembedded.5%29.aspx>

## Enabling Enhanced Write Filter

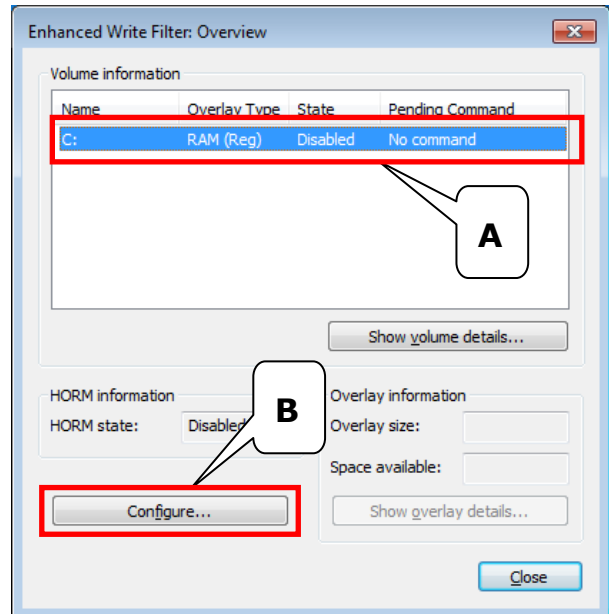
Follow these steps to enable the Enhanced Write Filter. Keep in mind that, while FBWF and EWF may both be enabled on the same machine; FBWF can not protect a volume also protected by EWF. Similarly, EWF can not protect a volume also protected by FBWF.

1. To open the EWF control dialog, open the system tray (located in the lower right corner of the desktop) and right-click on the padlock icon.

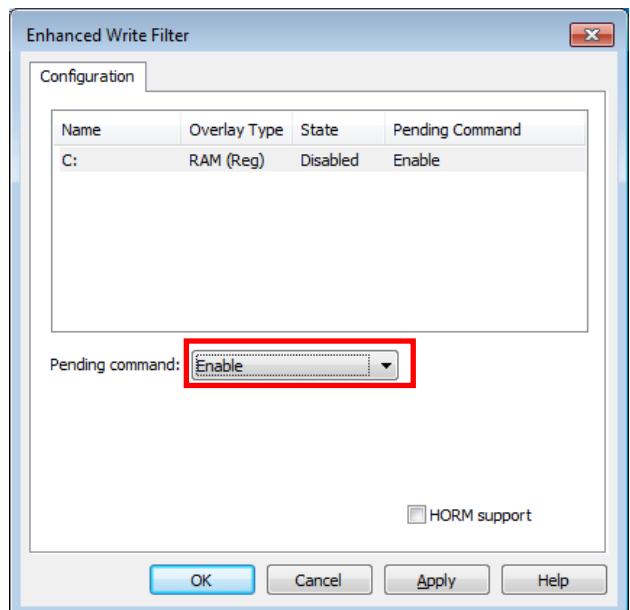
**NOTE:** When disabled, the icons for EWF and FBWF are identical. After the dialog opens be sure to verify you have opened the correct window.



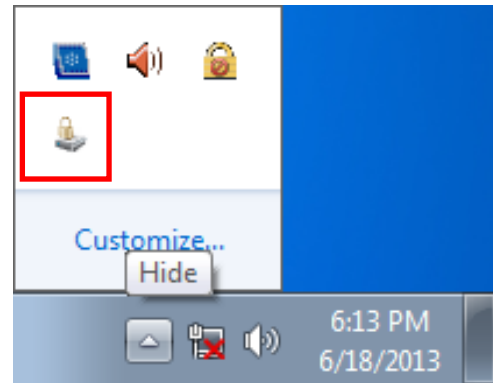
2. Select the volume you wish to enable write-protection on by selecting the partition (A) in the **Volume Information** dialog, and then pressing the **Configure** button (B) in the lower left section of the dialog.



3. After opening the configuration dialog, choose to enable Enhanced Write Filter on your drive volume by selecting **Enable** from the **Pending command** dialog and then clicking **OK** to close the dialog.



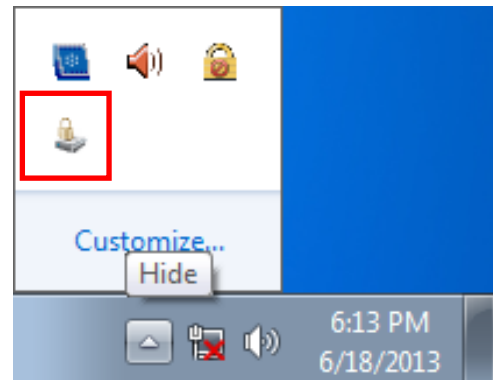
4. Reboot the system.
5. Open the system tray (located in the lower right corner of the desktop) and check to verify that the padlock icon now shows the drive volume is locked down with EWF.



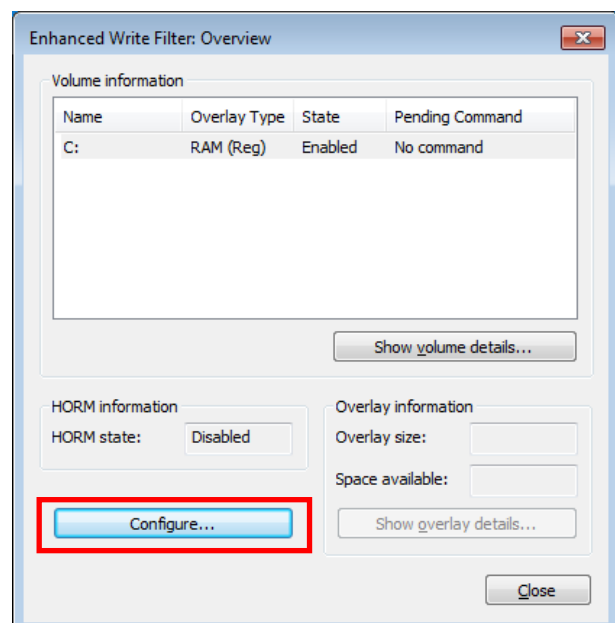
## Committing Data and/or Disabling EWF

When EWF is enabled on a drive users will need to go through a special process to write any data to the hard drive. Writing data to the drive in this situation is called a **Commit**, and users must be given administrator privileges to be able to do so.

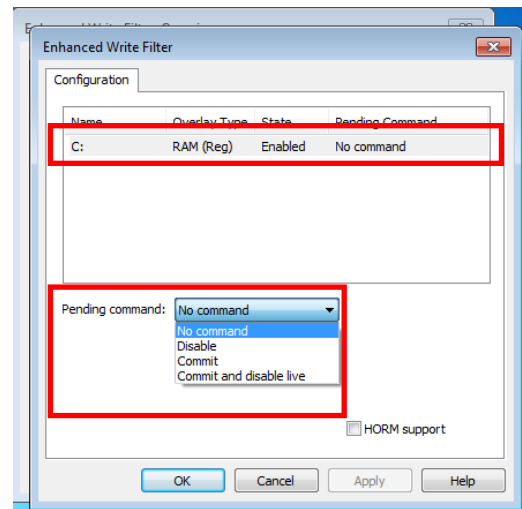
1. Open the EWF control dialog by right-clicking on the padlocked drive in the system tray (located in the lower right corner of the desktop).



2. Once the EWF control dialog is open, select the drive you wish to operate and click on the **Configure** button in the lower left corner. This will open the EWF **Configuration** page.



3. Once the EWF control dialog is open, select the drive you wish to operate from the upper window of the dialog, and then click on the **Pending Command** drop-down menu just beneath. Here, you will see four choices:
- **No Command**
  - **Disable:** This disables EWF on the selected drive. Be aware that the system will automatically reboot if you select this command.
  - **Commit:** This writes all current changes to the system data to the hard drive; any changes that have been made to the system settings.
  - **Commit and Disable Live:** This writes all current data and changes to the system, and also turns off EWF on the selected drive (so that all future data and system changes will also be committed to the drive, as well). Selecting this option will NOT automatically reboot your system.



For more detailed descriptions of these commands, please refer to the Microsoft website shown below:  
[http://msdn.microsoft.com/en-us/library/ff794092\(v=winembedded.60\).aspx](http://msdn.microsoft.com/en-us/library/ff794092(v=winembedded.60).aspx)

## File-Based Write Filter

### Overview

This section describes how to use the File-Based Writer Filter (FBWF). Please note that when Enhance Writer Filter is enabled, the File-Based Writer Filter function will not work.

According to Microsoft:

*File-Based Write Filter (FBWF) allows the Windows Embedded platform to maintain the appearance of read and write access on write-sensitive or read-only storage. FBWF makes read and write access transparent to applications.*

*Writing to storage media may be undesirable or impossible in embedded devices. FBWF redirects all writes targeted for protected volumes to a RAM cache called an overlay. Used in this context, an overlay is similar to a transparency overlay on an overhead projector. Any change made to the overlay affects the picture as seen in the aggregate, but if the overlay is removed, the underlying picture remains unchanged.*

FBWF provides the advanced feature than EWF to let user specify the directory to write the data to disk drive directly, in our default setting, the default directory is under c:\temp, which means you can read/write the data into disk without commit action.

To get more details about EWF configuration and usage, you may consult the Microsoft help file that comes with your computer, or:

Go to Microsoft's [FBWF Installation and Configuration](#) help pages.

Go to Microsoft's [FBWF overview](#) on the official Microsoft FBWF help pages.

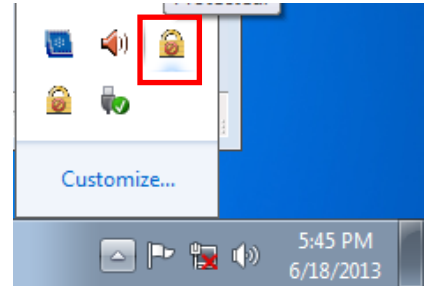
Go to Microsoft's detailed description of [FBWF features](#) on the FBWF help pages.

Go to Microsoft's detailed description of the [FBWF API](#).

## Configuring File-Based Write Filter

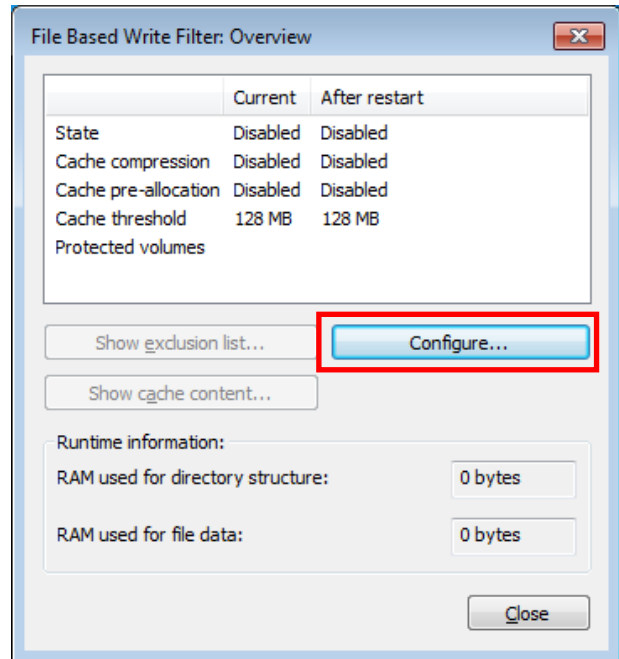
Follow these steps to enable the Enhanced Write Filter. Keep in mind that, while FBWF and EWF may both be enabled on the same machine; FBWF can not protect a volume also protected by EWF. Similarly, EWF can not protect a volume also protected by FBWF.

- To open the FBWF overview window, open the system tray (located in the lower right corner of the desktop) and right-click on the padlock icon.



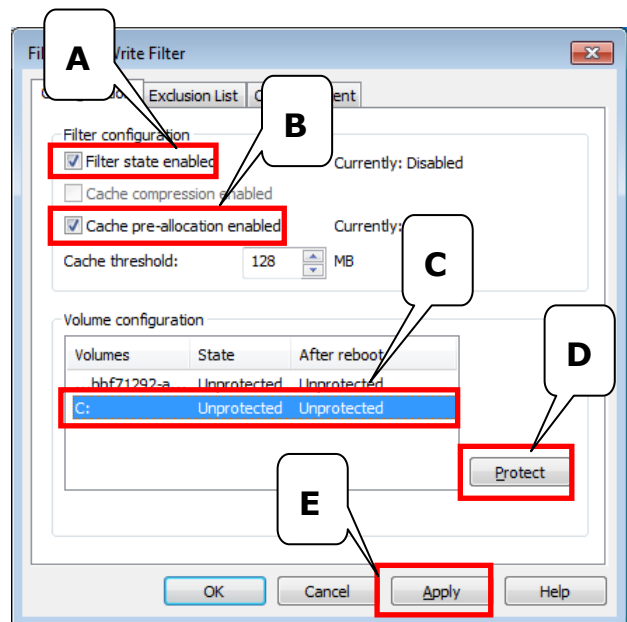
**NOTE:** When disabled, the icons for EWF and FBWF are identical. After the dialog opens be sure to verify you have opened the correct window.

- When the overview window opens, you will receive a quick report on the current FBWF configuration. The diagram at right shows what it will look like before it is enabled. To continue with the setup, click on the **Configure** button just before the report window.



- The FBWF configuration window is considerably more complicated than the EWF setup. To enable FBWF protection on your main storage drive, you will need to enable the filter by ticking **Filter state enabled (A)** and **Cache pre-allocation enabled (B)**. Next, select the drive you want to protect from the **Volume Configuration** menu (C) and then click on the **Protect** button. Finally, click on **Apply (E)**, or **OK** to set the FBWF configuration.

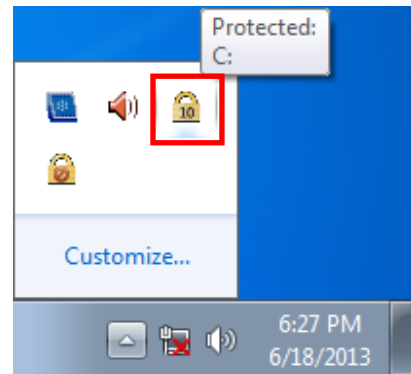
**Cache compression** may be used on the overlay cache to minimize the amount of memory used. Cache compression decreases performance when accessing protected volumes, and cannot be used with pre-allocation.



**Cache pre-allocation** sets the memory space available for the overlay cache at the system's start, instead of adjusting it as needed. It cannot be used with cache compression.

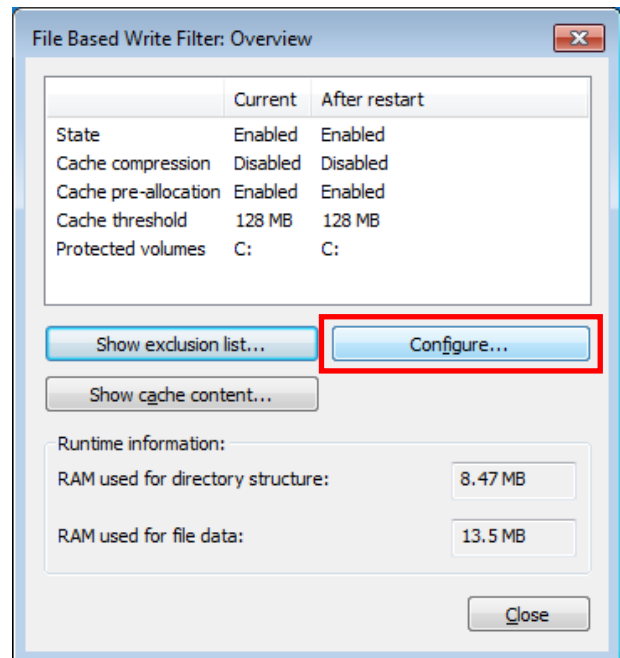
The **cache threshold** specifies the amount of memory that can be used by the write filter for the overlay cache. The default value and size limits for the overlay cache vary by operating system.

4. Reboot the system.
5. Once again, open the system tray (located in the lower right corner of the desktop) and check to verify that the padlock icon now shows you have enabled FBWF. The icon should have changed to become a padlock displaying the number 10, as shown in the figure at right.



## Excluding Files from FBWF Protection

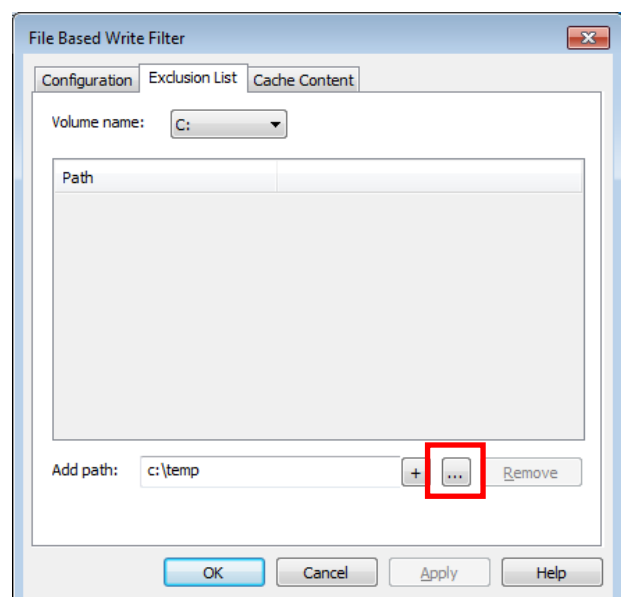
1. Click on the FBWF icon (in the desktop systray) to open the **Overview** dialog. Click on **Configure** to switch to the configuration interface.



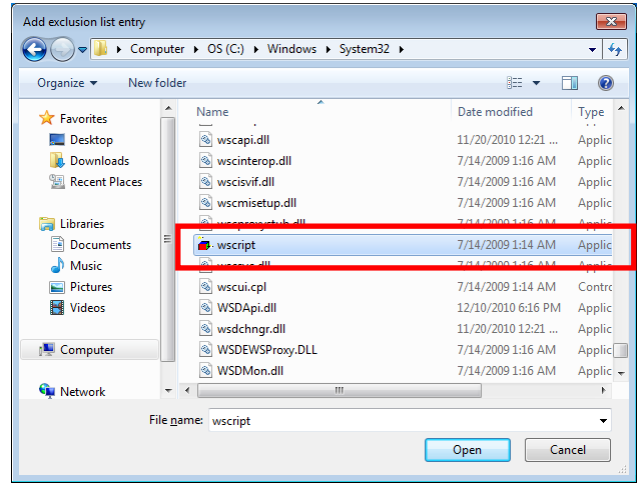
2. Click on the **Exclusion List** tab. Make sure the correct drive volume is shown in the dropdown menu labeled **Volume Name**; if not, select the correct volume from the dropdown menu.

Next, you must select the file path you wish to exclude from FBWF protection; this will allow the drive to write to the selected files and directories, so be careful. You may indicate an entire section of the file tree by selecting an entire file path, or you may select individual files.

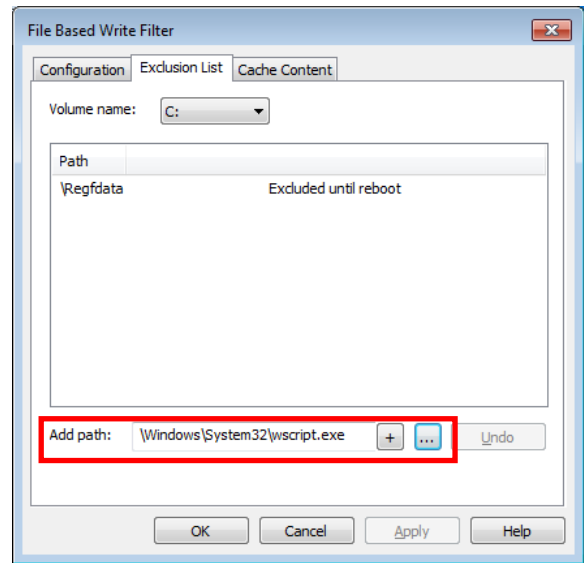
To select individual files, click on the **Browse** button (marked with ellipses, in the lower right corner, as shown at right). This will open a Windows Explorer interface.



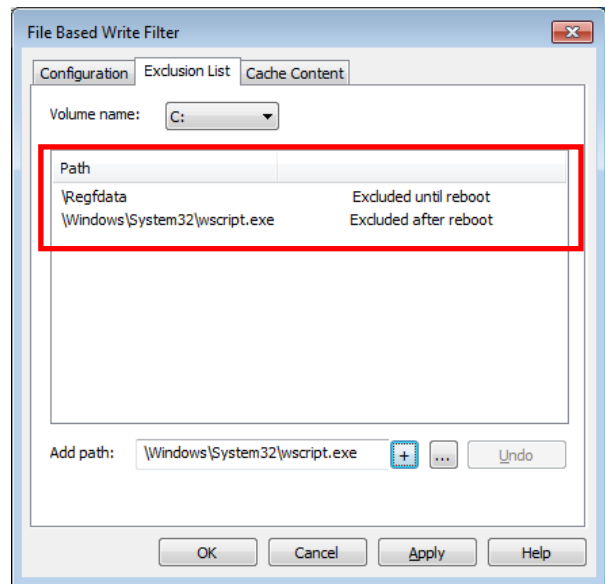
- 3. Navigate to the file(s) you wish to exclude from FBWF protection, select the file, and then click **Open** to enter the path into the exclusion dialog; this will exit the Windows Explorer interface and return you to the **Exclusion List** interface shown in step 2.



- 4. You should now see the file or file path you selected for exclusion listed in the **Add Path** dialog, at the bottom of the **Exclusion List** tab. Click the add button (+) to add the path or file to the exclusion list.



- 5. After adding a file or path to the exclusion list, you should see it listed in the **Path** window. If the file does not appear, then it has not yet been added.



- 13. Reboot the system for the changes to take effect.

# Managing Temporary Files Cached in the Overlay

1. In the **Cached Content** tab you will see all the files currently cached in the RAM overlay, with three commands you may execute:

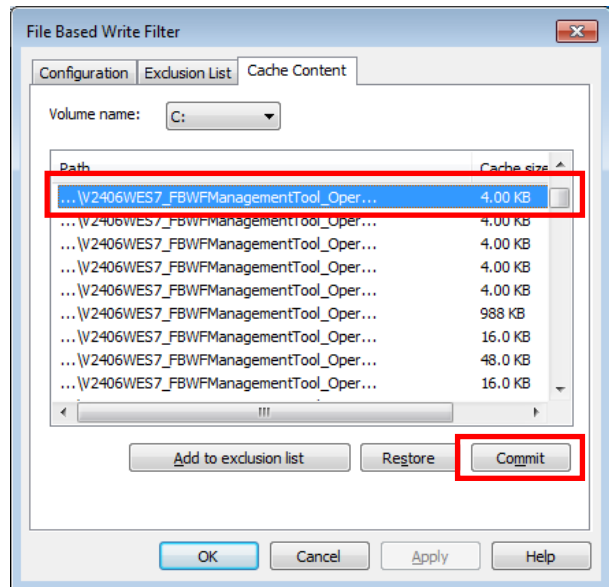
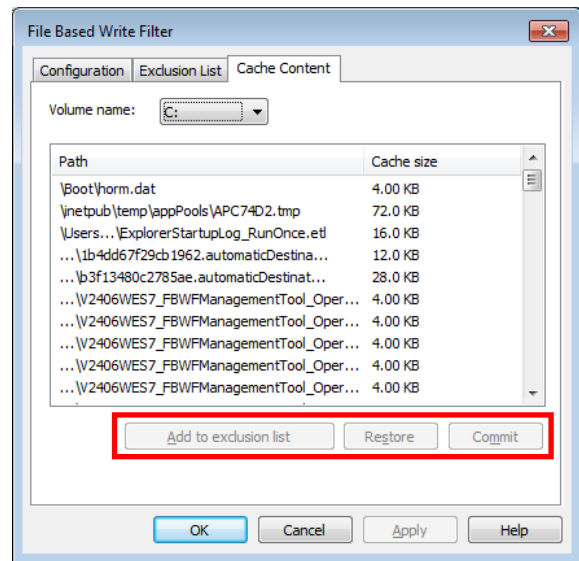
**Commit** will save a file from the cache to permanent storage, deleting the file from the overlay and overwriting the original.

**Restore** will return the file to its original state, removing it from the overlay cache and discarding the changes that caused it to be added to the cache.

**Add to exclusion list** adds the file to the exclusion list after the next restart. Because this makes the file read-only, if it is executed on the wrong file it may render your system or particular applications inoperable.

2. The most common usage of the Cache Content filter will likely be to permanently write content to the hard drive. To do this, select the file you wish to write to permanent memory and click on the **commit** button. This will delete the file from the cached overlay and replace the current file in permanent storage with the modified cache file.

Users should understand that if they commit a configuration or application file, they will be permanently altering the setup and/or performance of the application or system.





# Serial Port Configuration

---

This chapter describes how to set up and configure serial interface on the DA-685.

The following topics are covered in this chapter:

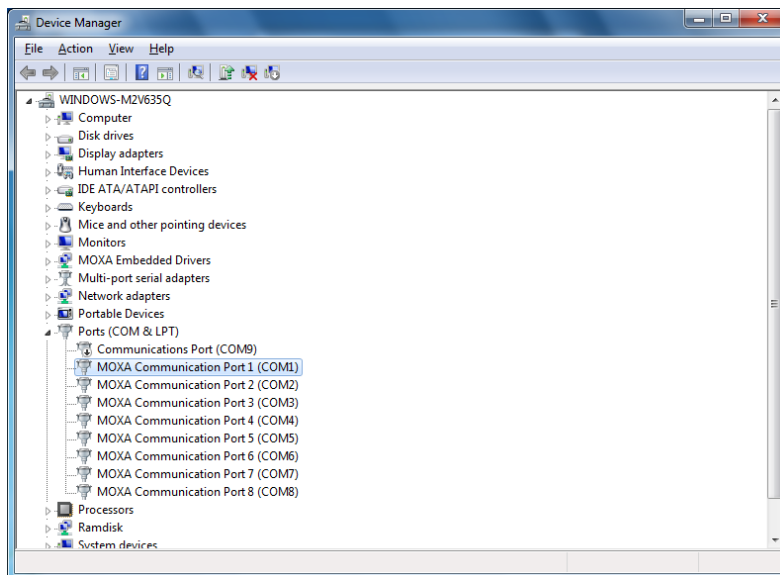
- **Serial Port Configuration**

# Serial Port Configuration

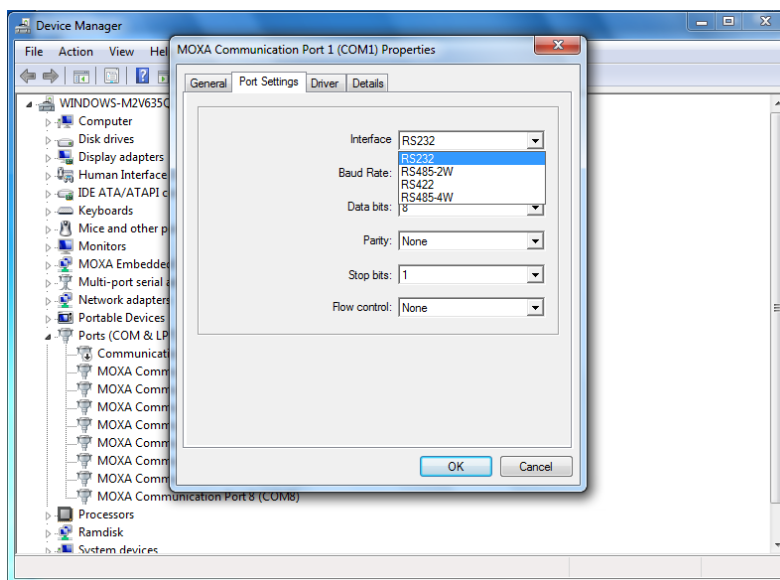
The DA-685 contains 8 high-performance serial ports, of which two (COM1, COM2) are software-selectable RS-232/422/485 interfaces, and the remaining six are 2-wire RS-485 interfaces. The factory default mode for COM1 and COM2 is RS-232; follow the directions below to reset them to another interface.

**To configure serial port, you can follow below step.**

1. Open the **Control Panel** and run **Device Manager**.
2. Double click **MoxaCommunication Port [1 - 8]** to open the serial port you want to configure.



3. Select the operation mode and then click **OK**. The new operation mode will take effect when the port is next opened. // The operation mode will effect at next port openAPI.



## WARNING

Serial ports 3 to 8 **only** support 2-wire RS-485 mode. If set to another logical interface, serial communications on that port will fail as an incorrect configuration.

## Customizable Sample Code

---

This chapter uses sample code to show how scripting may be used to add customized capabilities to the DA-685 computing platform.

The following topics are covered in this chapter:

❑ **Sample Code for Customizing the DA-685**

- The DIO Control Walkthrough
- The LED Control Walkthrough

❑ **Watchdog Control Code**

- The Watchdog Control Code Walkthrough

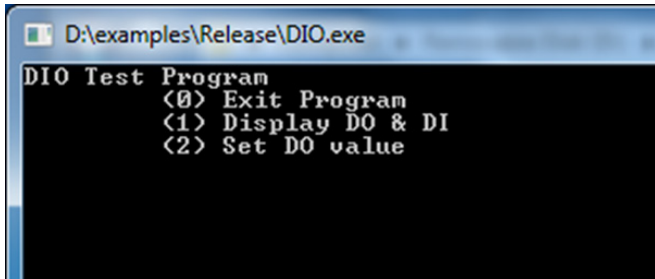
# Sample Code for Customizing the DA-685

The DA-685 computer comes with several pieces of sample code so users may customize LED notifications behavior, digital I/O control, or to initiate emergency reboots when critical system applications come to a halt.

## The Digital I/O Control Walkthrough

The DA-683 is designed with 4 digital inputs and 4 digital outputs that integrators and system administrators may customize for their needs. The source code for controlling digital I/O behavior is located in the folder **<Software DVD>\examples\Example\C++\DIO\**, while the compiled executable **DIO.exe** is located under **<Software DVD>\examples\Release**. You can follow the steps below to test the digital I/O control script, or you may freely modify the control script to create customized patterns that are associated with specific system events. To review the digital I/O control code, see **The Digital I/O Control Sample Code** section in Appendix A of this manual.

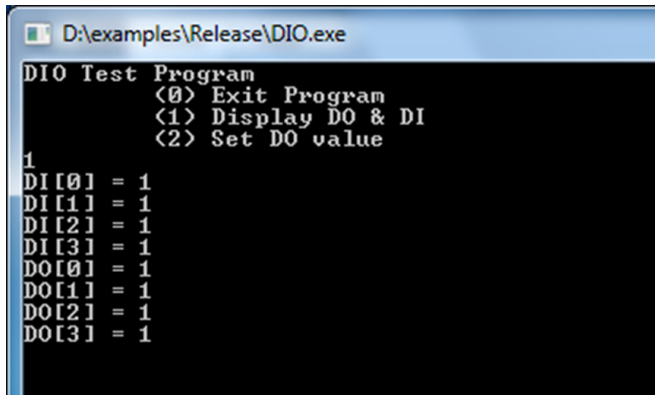
1. Create the **c:\programs\examples** folder and copy **DIO.exe** into that folder. Run **DIO.exe**.
2. You will be presented with a menu of three choices; first, select **1** to display the DIO's current status.



```

D:\examples\Release\DIO.exe
DIO Test Program
(0) Exit Program
(1) Display DO & DI
(2) Set DO value
  
```

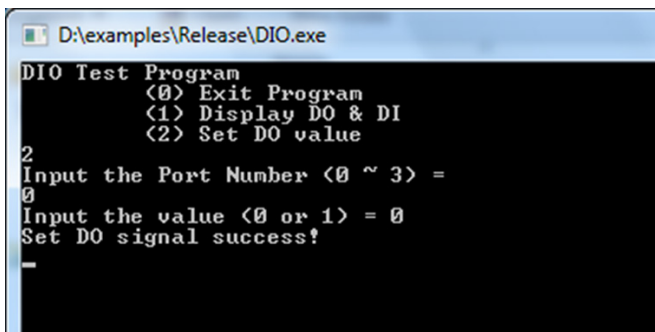
3. In the screenshot below, the user has selected **1**.



```

D:\examples\Release\DIO.exe
DIO Test Program
(0) Exit Program
(1) Display DO & DI
(2) Set DO value
1
DI[0] = 1
DI[1] = 1
DI[2] = 1
DI[3] = 1
DO[0] = 1
DO[1] = 1
DO[2] = 1
DO[3] = 1
  
```

4. You may now run **DIO.exe** again, but this time select **2**. At the next prompt, enter the ID number (0 to 3) of the digital interface you wish to activate, and when prompted enter either **1** (to turn it on), or **0** (to turn it off).



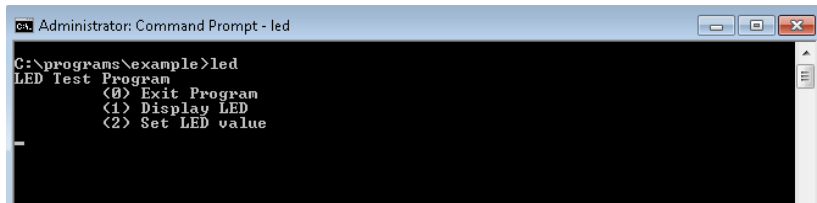
```

D:\examples\Release\DIO.exe
DIO Test Program
(0) Exit Program
(1) Display DO & DI
(2) Set DO value
2
Input the Port Number (0 ~ 3) =
0
Input the value (0 or 1) = 0
Set DO signal success!
-
  
```

## The LED Control Walkthrough

The DA-685 is designed with 8 programmable LEDs that integrators and system administrators may customize for system notification needs. The source code for controlling LED behavior is located in the folder <Software DVD>\examples\Example\C++\LED\, while the compiled executable **LED.exe** is located under <Software DVD>\examples\Release. You can follow the steps below to test the LED control script, or you may freely modify the control script to create customized patterns that are associated with specific system events. To review the LED control code, see [The LED Control Script](#) section in Appendix A of this manual.

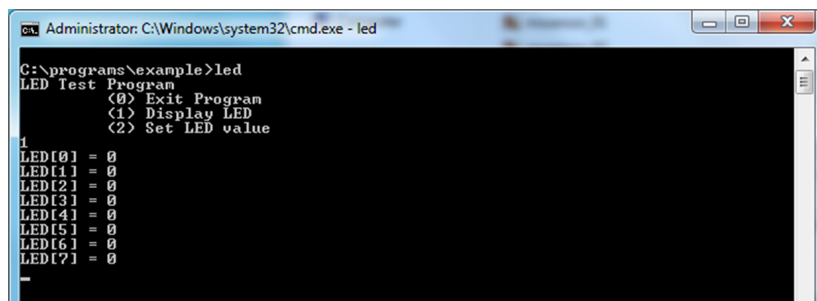
5. Create the **c:\programs\examples** folder and copy **LED.exe** into that folder. Run **LED.exe**.
6. You will be presented with a menu of three choices; first, select **1** to display the LED's current status.



```

Administrator: Command Prompt - led
C:\programs\example>led
LED Test Program
  <0> Exit Program
  <1> Display LED
  <2> Set LED value
  
```

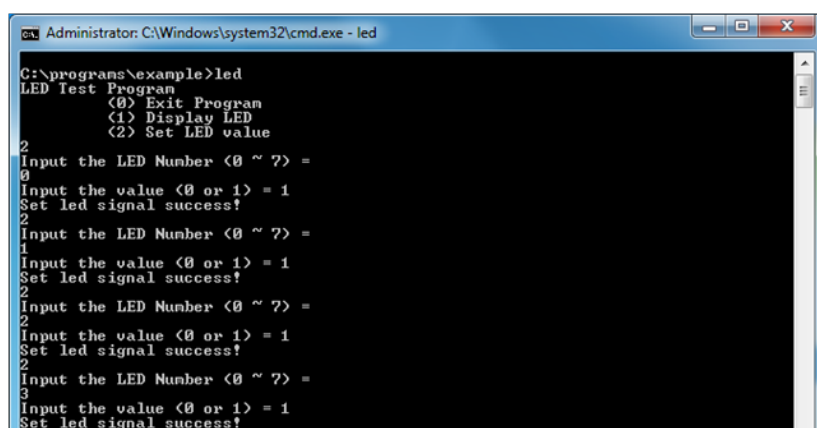
7. In the screenshot below, the user has selected **1** and is viewing the current status of all LEDs. The value **0** shown next to each entry indicates that all of the LEDs are currently turned off. Visually verify this by examining the DA-685's front panel.



```

Administrator: C:\Windows\system32\cmd.exe - led
C:\programs\example>led
LED Test Program
  <0> Exit Program
  <1> Display LED
  <2> Set LED value
  1
LED[0] = 0
LED[1] = 0
LED[2] = 0
LED[3] = 0
LED[4] = 0
LED[5] = 0
LED[6] = 0
LED[7] = 0
  
```

8. You may now run **LED.exe** again, but this time select **2**. At the next prompt, enter the ID number (0 to 7) of an LED to activate, and when prompted enter either **1**(to turn it on), or **0**(to turn it off). The LEDs on the main DA-685 panel correspond to 0 through 3; 4 and 5 correspond to those on the first module; and 6 and 7 to those on the second.



```

Administrator: C:\Windows\system32\cmd.exe - led
C:\programs\example>led
LED Test Program
  <0> Exit Program
  <1> Display LED
  <2> Set LED value
  2
Input the LED Number <0 ~ 7> =
0
Input the value <0 or 1> = 1
Set led signal success!
2
Input the LED Number <0 ~ 7> =
1
Input the value <0 or 1> = 1
Set led signal success!
2
Input the LED Number <0 ~ 7> =
2
Input the value <0 or 1> = 1
Set led signal success!
2
Input the LED Number <0 ~ 7> =
3
Input the value <0 or 1> = 1
Set led signal success!
  
```

## Watchdog Control Code

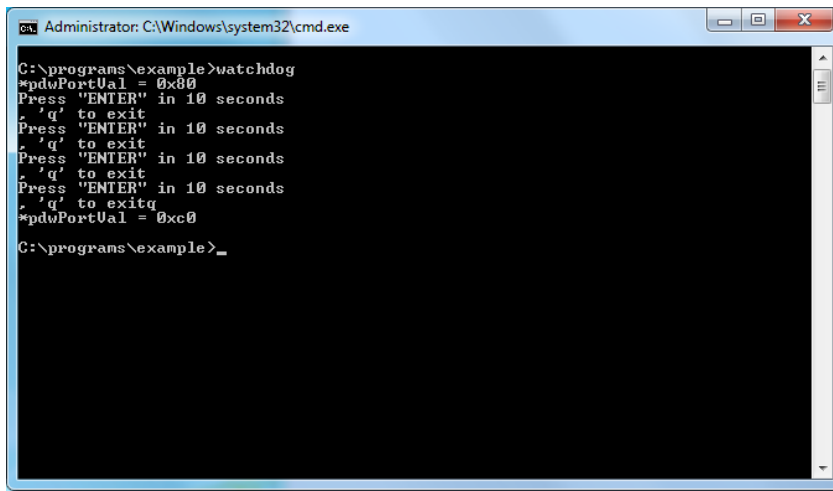
The code for controlling the watchdog/COP timer is the simplest and least-customizable of the included sample scripts. The code itself is provided on the software DVD, under \examples\Example\C++\WatchDog\, and the executable file **Watchdog.exe** is on the software DVD\examples\Release. This sample code may be modified to integrate the watchdog timer with specific applications

Using this code, any program may be set up so that the watchdog timer will provide a last-line failsafe against application crashes. For instance, the DA-685 may be set up so that whenever a mission-critical application fails the watchdog timer will send a message to a system administrator and then initiate an automatic reboot.

To test the watchdog executable, follow the steps below.

## The Watchdog Control Code Walkthrough

1. If you haven't yet, create the folder `c:\programs\examples`, then copy over **Watchdog.exe** and run the script.
2. To keep the system from rebooting, users need to press Enter at least once every 10 seconds, or the system will reboot automatically.
3. To stop the watchdog, press **q** to exit the program.



```
Administrator: C:\Windows\system32\cmd.exe
C:\programs\example>watchdog
*pdwPortUal = 0x00
Press "ENTER" in 10 seconds
, 'q' to exit
Press "ENTER" in 10 seconds
, 'q' to exit
Press "ENTER" in 10 seconds
, 'q' to exit
Press "ENTER" in 10 seconds
, 'q' to exitq
*pdwPortUal = 0xc0
C:\programs\example>_
```

# System Recovery

---

This DA-685 ready-to-run embedded computer is equipped with a Windows Embedded Standard 7 operating system. This chapter describes how to use the Moxa recovery process with the Windows system.

The following topics are covered in this chapter:

- **Overview: Setting Up the Recovery Environment**
- **Step 1: Prepare the USB drive**
- **Step 2: Setting the BIOS to Boot via USB**
- **Step 3 (opt.): Create a Custom System Image**
- **Step 4: Reset BIOS to Original State**
- **Step 5: Perform a Test Restoration**

# Overview: Setting Up the Recovery Environment

The recovery procedure itself requires only a DA-685 computer and a bootable USB drive. To set this up, you will need a DA-685 computer, a 4 GB (min.) USB drive, and a copy of the recovery suite.

The following procedure describes the basic process of setting up the system recovery environment:

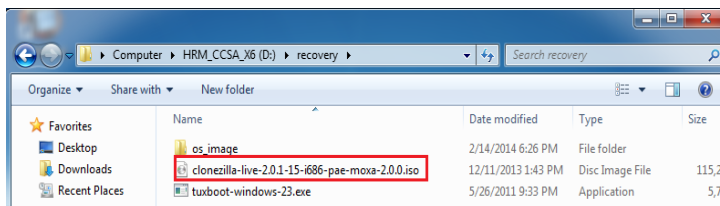
1. First, the recovery programs and system image file will be copied over to the USB drive, and the drive will be set up to provide a system boot process by copying an ISO image of the boot environment to the USB.
2. The system will be re-booted, and BIOS will be manually configured to boot the system from the USB port.
3. An image of the current software system will be created on the USB drive, for the recovery environment to use when restoring the system.
4. The system will be re-booted again, and the BIOS returned to its original state.

## Step 1: Prepare the USB drive

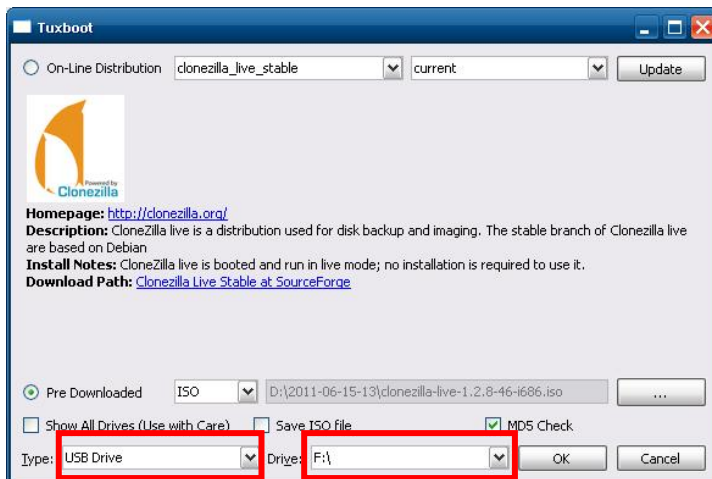
1. Load the software DVD that came with your DA-685 computer and execute **tuxboot-windows-23.exe** from the software **DVD\recovery\** folder, select **Pre-Downloaded**, and click the button marked with an ellipsis (...) to browse the file system and find the location of the boot environment's ISO image.



2. Navigate to `\recovery\` on the software DVD and select the boot environment's ISO image.

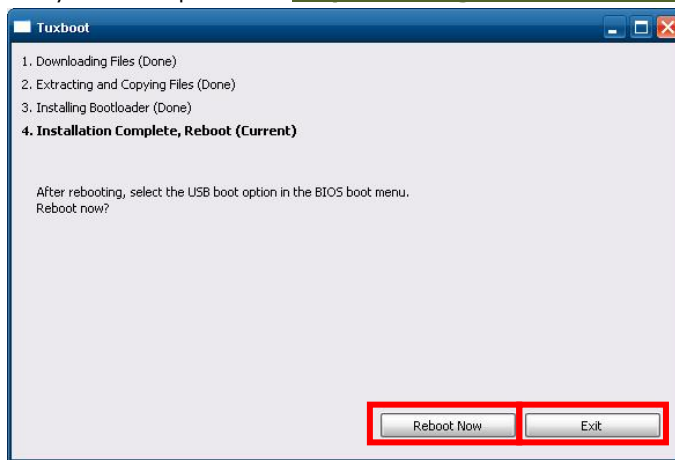



3. Set the device **Type** (lower left-hand corner) as **USB Drive**, then set the **Drive** dialog to the letter under which the USB is currently mounted.





4. Click **OK**, and the boot environment and bootloader will be copied to your USB drive.
5. Because of the file system naming conventions used, for any given computer only a single recovery image may be used on any given USB drive. Consequently, at this point, users need to make a decision about which sort of system recovery is preferred:
  - A. a basic recovery of the root OS, or
  - B. a recovery image of the fully configured OS, with all user-installed software applications and scripts.
- A. To configure the recovery environment to boot into a **fully configured system**, users should click **Reboot Now** to close the installation environment and restart the computer. They should then proceed to the next section, **Step 2: Setting the BIOS to Boot via USB** and continue the installation of the recovery environment by continuing to **Step 3 (opt.): Creating a Custom System Image**.
- B. To configure the recovery environment to boot into a clean OS image with no applications, users should instead click **Exit** hereto complete the installation and return to the OS. From within the desktop environment, the user should then manually copy the directory containing the base OS from the software DVD over to the USB drive. To do this, copy `#:\<SoftwareDVD>\recovery\os_image` over to the partition image directory, `F:\home\partimag\`. At this point, **Step 1** has been completed, and you should proceed to **Step 2: Setting the BIOS to Boot via USB**.



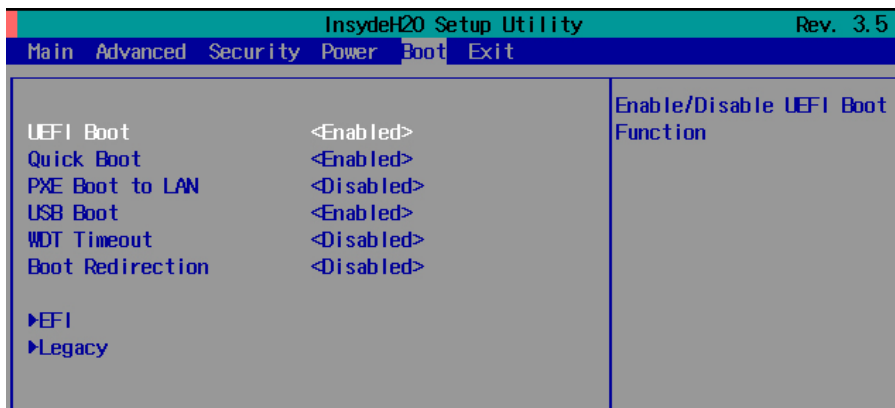
 **ATTENTION**

Because of the peculiarities of the file tree naming, it is not possible to include both the base OS image and a fully configured system image on the same USB stick. If users wish to configure both, then two USB drives must be used, each configured according to the two different alternatives offered here.

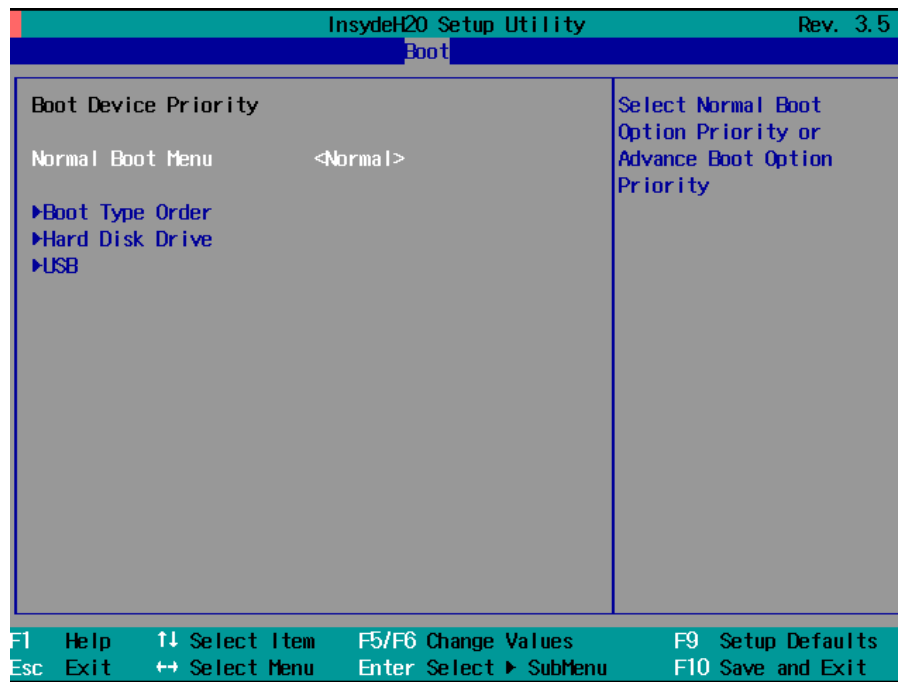
## Step 2: Setting the BIOS to Boot via USB

At this stage, users will reset the BIOS so that the system boots directly from the USB. This must be done before the rest of the system recovery environment may be configured

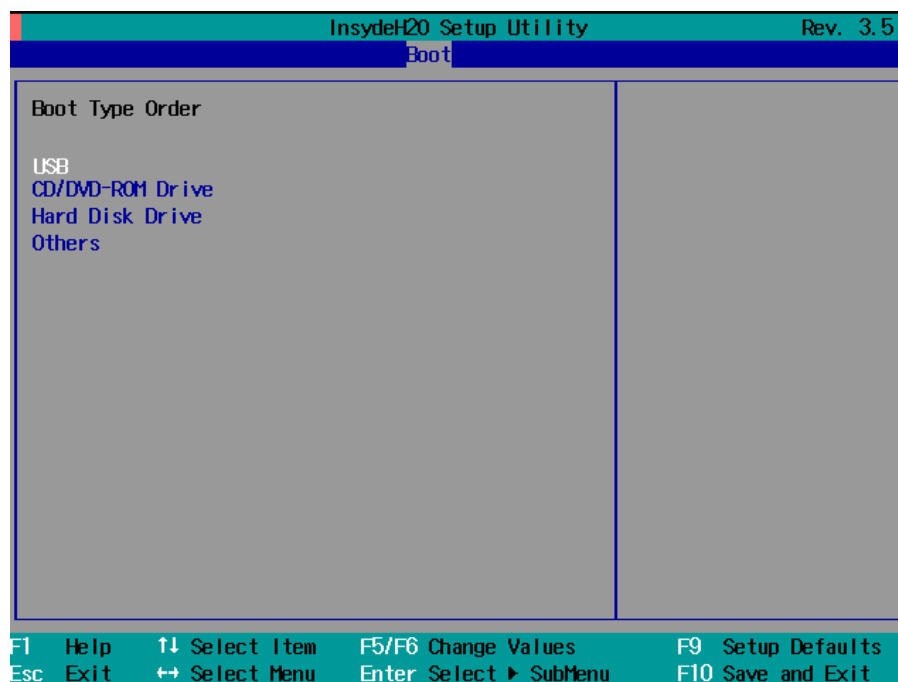
1. Turn on the computer and, during the POST process, press F2 until you hear a long beep. You should then enter the BIOS setup menu. Use the arrow keys to navigate to the **Boot** tab, and then press **Enter**.
2. Use the arrow keys to navigate to the **Boot** tab, and then press **Enter**.



3. Select **Boot Type Order** to open the dialog that will allow you to set the boot priority for the system drives.



4. Use the arrow keys to highlight **USB** and then press the plus key (+) to move it to the first position, or select the other options above it and use the dash key(-) to move them down.



5. Press F10 and then press **Enter** to save and exit the BIOS configuration interface. This should initiate the next reboot, during which your system should now boot from the USB drive.

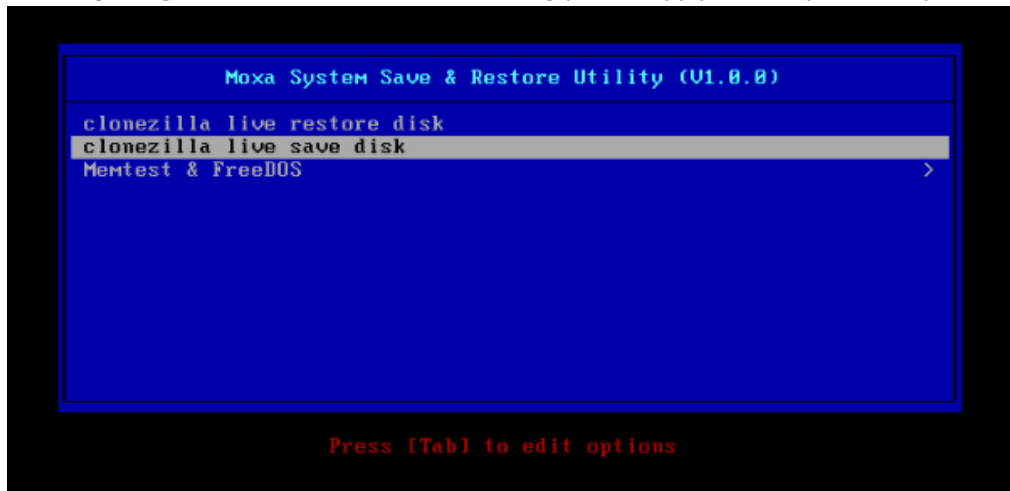
## Step 3 (opt.): Create a Custom System Image

The instructions which follow are only to be used if you decided in [Step 1](#) of this process **to create a full copy of an already-configured system**. If you have not yet installed any software on your system, then return to [section 5b](#) of [Step 1: Preparing the USB Drive](#) and follow the instructions to create a clean OS image.

Using this procedure, you will save to the USB drive a copy of the entire system **as it is currently configured** to be used as a **full system recovery image** should the system crash. **All files under** `F:\home\partimag\` **will be overwritten**. Additionally, you should have already changed the BIOS settings to make the USB drive

the first boot priority. If you have not yet reset the boot priority, first return to [Step 2: Setting the BIOS to Boot via USB](#), just above, and follow the directions there.

1. Once the system has launched and the DA-685 has booted the recovery environment from the USB drive, navigate to the entry **Clonezilla Live Save Disk**, and select it by pressing **Enter**. This will take you into the **recovery image creation environment**, allowing you to copy your full system setup to the USB drive.



2. The DA-685 will now boot into the image creation environment. Wait for the boot process to finish.

```
[ 5.141941] sd 0:0:1:0: [sdb] Attached SCSI disk
[ 5.257277] sd 0:0:0:0: Attached scsi generic sg0 type 0
[ 5.269691] sd 0:0:1:0: Attached scsi generic sg1 type 0
[ 5.280668] sr 1:0:0:0: Attached scsi generic sg2 type 5
Begin: Loading essential drivers ... [ 5.772551] Atheros(R) L2 Ethernet Driver - version 2.2.3
[ 5.774561] Copyright (c) 2007 Atheros Corporation.
[ 5.863196] Broadcom NetXtreme II 5771x 10Gigabit Ethernet Driver bnx2x 1.62.00-6 (2011/01/30)
[ 6.005932] Btrfs loaded
[ 6.054095] device-mapper: uevent: version 1.0.3
[ 6.059737] device-mapper: ioctl: 4.19.1-ioctl (2011-01-07) initialised: dm-devel@redhat.com
done.
Begin: Running /scripts/init-premount ... done.
Begin: Mounting root file system ... [ 6.289382] Uniform Multi-Platform E-IDE driver
[ 6.301889] ide_generic: please use "probe_mask=0x3f" module parameter for probing all legacy ISA
IDE ports
[ 6.801141] NTFS driver 2.1.30 [Flags: R/W MODULE].
[ 6.914295] NTFS volume version 3.1.
Begin: Running /scripts/live-premount ... done.
[ 7.331989] FAT: utf8 is not a recommended IO charset for FAT filesystems, filesystem will be case
sensitive!
[ 7.453369] aufs: module is from the staging directory, the quality is unknown, you have been war
ned.
[ 7.479098] aufs 2.1-standalone.tree-38-rcN-20110228
[ 7.610228] loop: module loaded
[ 7.905144] squashfs: version 4.0 (2009/01/31) Phillip Lougher
Begin: Running /scripts/live-realpremount ... done.
Begin: Mounting "/live/image/live/filesystem.squashfs" on "/"dev/loop0" .
.. done.
done.
Begin: Running /scripts/live-bottom
... Begin: Configuring fstab ... done.
Begin: Preconfiguring networking ... done.
Begin: Loading preseed file ... done.
Begin: Running /scripts/init-bottom ... done.
INIT: version 2.88 booting
Using makefile-style concurrent boot in runlevel S.
_
```

3. Once the image creation environment has completed booting up, you will be given a warning and asked if you wish to continue. Please keep in mind that if you create the recovery image, then **any residual files currently copied to the /home/partimag directory will be deleted**. If there are any files remaining in the USB **partition image** directory and you wish to save them, you must exit the recovery environment and copy these files to another disk. If you wish to continue with the image creation, press **Y** (case insensitive) to continue.

```

Setting the TERM as linux
*****
Clonezilla image dir: /home/partimag
*****
Shutting down the Logical Volume Manager
. No volume groups found
. No volume groups found
Finished Shutting down the Logical Volume Manager
Selected device [sda] found!
The selected devices: sda
*****
Activating the partition info in /proc... done!
Selected device [sda] found!
The selected devices: sda
Searching for data partition(s)...
Excluding busy partition or disk...
Unmounted partitions (including extended or swap): sda1
Collecting info.. done!
Searching for swap partition(s)...
Excluding busy partition or disk...
Unmounted partitions (including extended or swap): sda1
Collecting info.. done!
The data partition to be saved: sda1
The swap partition to be saved:
Activating the partition info in /proc... done!
Selected device [sda1] found!
The selected devices: sda1
Getting /dev/sda1 info...
*****
The following step is to save the hard disk/partition(s) on this machine as an image:
*****
Machine: VirtualBox
sda (2103MB_VBOX_HARDDISK_ata-VBOX_HARDDISK_VB1c64a0a3-c9f7523d)
sda1 (2065MB_ntfs(In_VBOX_HARDDISK_)_ata-VBOX_HARDDISK_VB1c64a0a3-c9f7523d)
*****
-> "/home/partimag/xpe_savedisk".
Are you sure you want to continue? ? (y/n) y

```



## WARNING

The same filename is used for all recovery images, whether for the full system backup or for the clean OS image installation. This means that currently, it is impossible to have more than one system image per USB drive.

- At this point, the recovery environment will copy of the entire hard drive to your USB drive. This will likely take several minutes, and perhaps as long as half an hour. Do not remove the USB drive during this time; wait patiently for the process to finish. Depending on the speed of your USB drive, this may be a good time to get a cup of coffee, or take a nap.

```

/dev/sdb1: read failed after 0 of 2048 at 0: Input/output error
. No volume groups found
. No volume groups found
Finished Shutting down the Logical Volume Manager
Checking the integrity of partition table in the disk /dev/sda...
Reading the partition table for /dev/sda...RETVAl=0
*****
done!
Saving the MBR data for sda...
1+0 records in
1+0 records out
512 bytes (512 B) copied, 0.00347646 s, 147 kB/s
*****
Starting saving /dev/sda1 as /home/partimag/xpe_savedisk/sda1.XXX...
/dev/sda1 filesystem: ntfs.
*****
Checking NTFS integrity in /dev/sda1... done!
Checking the disk space...
Use ntfsclone with gzip to save the image.
Image file will be split with size limit 1000000 MB.
*****
If this action fails or hangs, check:
* Is the disk full ?
*****
ntfsclone v2.0.0 (libntfs 10:0:0)
NTFS volume version: 3.1
Cluster size      : 2048 bytes
Current volume size: 2064510976 bytes (2065 MB)
Current device size: 2064513024 bytes (2065 MB)
Scanning volume ...
100.00 percent completed
Accounting clusters ...
Space in use      : 1770 MB (85.7%)
Saving NTFS to image ...
_ 0.64 percent completed

```

- At this point you may choose to power down the computer (press **0**), reboot (press **1**), enter a console terminal (access a console TTY -- press **2**), or re-initiate the entire procedure (press **3**). **Do not remove the USB drive until you have rebooted or powered down the system.**

```
Restoring the first 446 bytes of MBR data, i.e. executable code area, for sda... done!
*****
Now resize the partition for sda1
ntfsresize -f /dev/sda1
ntfsresize v2.0.0 (libntfs 10:0:0)
Device name      : /dev/sda1
NTFS volume version: 3.1
Cluster size     : 2048 bytes
Current volume size: 2064511488 bytes (2065 MB)
Current device size: 2064519024 bytes (2065 MB)
New volume size  : 2064511488 bytes (2065 MB)
Nothing to do: NTFS volume size is already OK.
*****
The grub directory is NOT found. Maybe it does not exist (so other boot manager exists) or the file
system is not supported in the kernel. Skip running grub-install.
*****
Found NTFS boot partition among the restored partition(s): /dev/sda1
Head and sector no. of /dev/sda from EDD: 64, 63.
The start sector of NTFS partition /dev/sda1: 63
Adjust filesystem geometry for the NTFS partition: /dev/sda1
Running: partclone.ntfsfixboot -w -h 64 -t 63 -s 63 /dev/sda1
ntfsfixboot version 0.9
done!
*****
*****
*****
This program is not started by Clonezilla server, so skip notifying it the job is done.
Finished!
Now syncing - flush filesystem buffers...

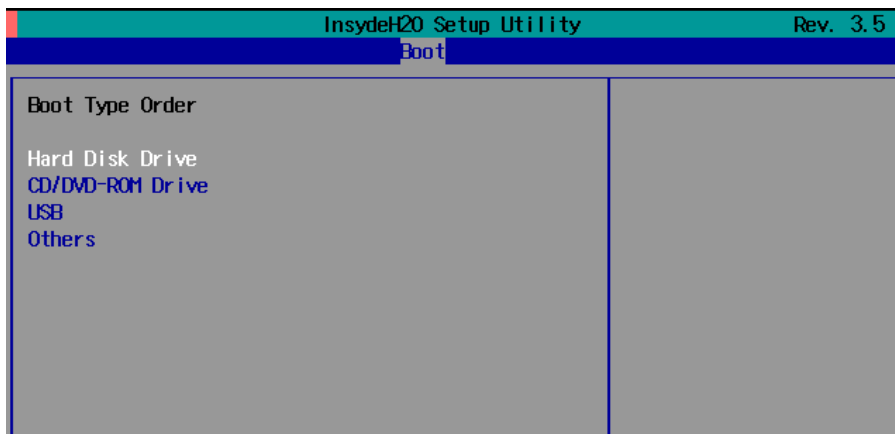
"ocs-live-restore" is finished.
Now you can choose to:
(0) Poweroff
(1) Reboot
(2) Enter command line prompt
(3) Start over
[2]
```

- Once you have powered down the system and removed the USB drive, you have finished configuring the recovery environment. The USB drive should be clearly labeled and stored in a safe place. You may now continue to the next section, where you will return the BIOS to its original state (Step 4) and test the recovery procedure for successful configuration (Step 5).

## Step 4: Reset BIOS to Original State

Now you will need to return the boot priority to its original configuration so that the system will boot from the original disk. This is done for two reasons; the first is security, so that the machine may not be rebooted from unauthorized USB drives. The second, however, is functional: currently, if the DA-685 is set to boot from the USB drive, then **the DA-685 will hang any time a USB data drive (i.e.: non-bootable image) is inserted in the machine at boot time.** The DA-685 does not currently have the capacity to distinguish between simple USB data drives and boot-capable OS drives.

- Reboot the system, and press **F2** and then select **SCU** to enter the BIOS setup menu.
- Select **Hard Disk** and shift it to the top boot priority by using the **+** key, then press **Enter**. Make sure the hard disk has first boot priority.



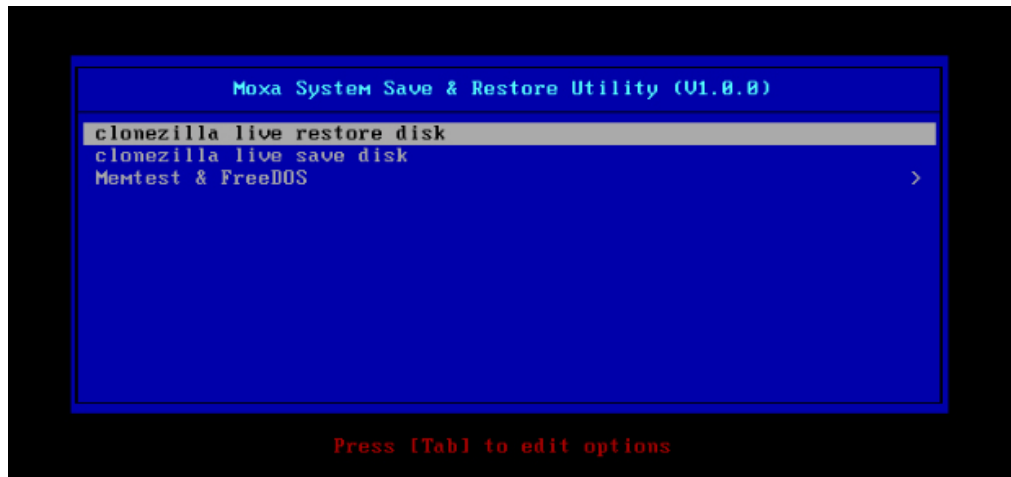


3. Press F10 and then press **Enter** to save and exit the BIOS settings dialog.

## Step 5: Perform a Test Restoration

Connect the USB drive to any of the DA-685's USB ports and then reboot the computer. The system will boot from the USB into the Clonezilla boot loader.

1. Select **ClonezillaLive Restore Disk** to boot into the system restoration environment.



2. Wait for the boot process to finish.

```
[ 5.153522] sd 0:0:0:0: [sda] Attached SCSI disk
[ 5.163726] sd 0:0:1:0: [sdb] Attached SCSI disk
[ 5.287941] sd 0:0:0:0: Attached scsi generic sg0 type 0
[ 5.310750] sd 0:0:1:0: Attached scsi generic sg1 type 0
[ 5.334915] sr 1:0:0:0: Attached scsi generic sg2 type 5
Begin: Loading essential drivers ... [ 5.690577] Atheros(R) L2 Ethernet Driver - version 2.2.3
[ 5.692430] Copyright (c) 2007 Atheros Corporation.
[ 5.776770] Broadcom NetXtreme II 5771x 10Gigabit Ethernet Driver bnx2x 1.62.00-6 (2011/01/30)
[ 5.914014] Btrfs loaded
[ 5.955475] device-mapper: uevent: version 1.0.3
[ 5.961407] device-mapper: ioctl: 4.19.1-ioctl (2011-01-07) initialised: dm-devel@redhat.com
done.
Begin: Running /scripts/init-premount ... done.
Begin: Mounting root file system ... [ 6.178946] Uniform Multi-Platform E-IDE driver
[ 6.186189] ide_generic: please use "probe_mask=0x3f" module parameter for probing all legacy ISA
IDE ports
[ 6.913744] FAT: utf8 is not a recommended IO charset for FAT filesystems, filesystem will be cas
e sensitive!
[ 7.047997] aufs: module is from the staging directory, the quality is unknown, you have been war
ned.
[ 7.072516] aufs 2.1-standalone.tree-38-rcN-20110228
Begin: Running /scripts/live-premount ... done.
[ 7.213433] loop: module loaded
[ 7.509770] squashfs: version 4.0 (2009/01/31) Phillip Lougher
Begin: Running /scripts/live-realpremount ... done.
Begin: Mounting "/live/image/live/filesystem.squashfs" on "//filesystem.squashfs" via "/dev/loop0" .
.. done.
done.
Begin: Running /scripts/live-bottom
... Begin: Configuring fstab ... done.
Begin: Preconfiguring networking ... done.
Begin: Loading preseed file ... done.
Begin: Running /scripts/init-bottom ... done.
INIT: version 2.88 booting
Using makefile-style concurrent boot in runlevel S.
live-config: hostname user-setup sudo locales tzdata keyboard-configuration sysvinit sysv-rc initram
fs-tools util-linux login openssh-server_
```

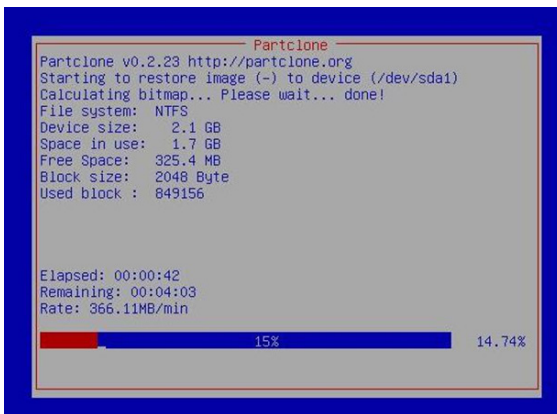
3. At this point, the system will remind you that you are about to overwrite your entire operating system with a new drive image, and ask you if you want to continue. When prompted, enter **Y** (case insensitive) from the keyboard to start the system restoration process. Any other letter or Ctrl-C will cancel it and exit Clonezilla.

```
The jobs in /etc/ocs/ocs-live.d/ are finished. Start "ocs-live-restore" now.
Setting the TERM as linux
*****
Clonezilla image dir: /home/partimag
*****
Shutting down the Logical Volume Manager
  No volume groups found
  No volume groups found
Finished Shutting down the Logical Volume Manager
*****
Activating the partition info in /proc... done!
*****
The following step is to restore an image to the hard disk/partition(s) on this machine: "/home/part
imag/xpe_savedisk" -> "sda sda1"
WARNING!!! WARNING!!! WARNING!!!
WARNING! THE EXISTING DATA IN THIS HARDDISK/PARTITION(S) WILL BE OVERWRITTEN! ALL EXISTING DATA WILL
BE LOST:
*****
Machine: VirtualBox
sda (2.1GB_VBOX_HARDDISK__ata-VBOX_HARDDISK_VB1c64a0a3-c9f7523d)
*****
Are you sure you want to continue? ?
[y/n] y
```

4. The system will give you another warning that you are about to overwrite your hard drive, and erase all data on the partition listed (**sda1**, in the example below). If you wish to continue, enter **Y** (case insensitive).

```
*****
Machine: VirtualBox
sda (2.1GB_VBOX_HARDDISK__ata-VBOX_HARDDISK_VB1c64a0a3-c9f7523d)
*****
Are you sure you want to continue? ?
[y/n] y
OK, let's do it!!
This program is not started by clonezilla server.
The following step is to restore an image to the hard disk/partition(s) on this machine: "/home/part
imag/xpe_savedisk" -> "sda (sda1)"
WARNING!!! WARNING!!! WARNING!!!
WARNING! THE EXISTING DATA IN THIS HARDDISK/PARTITION(S) WILL BE OVERWRITTEN! ALL EXISTING DATA WILL
BE LOST:
*****
Machine: VirtualBox
sda (2.1GB_VBOX_HARDDISK__ata-VBOX_HARDDISK_VB1c64a0a3-c9f7523d)
*****
Let me ask you again, Are you sure you want to continue? ?
[y/n] _
```

5. Wait for the process to finish.



6. At this point, complete the restoration by selecting (**0**) Power off. This will shut down the computer; however, if the **Power Switch** remains inserted in the front panel of the computer and is left in the **ON** position, then the system fail to shutdown and will immediately initiate a soft reboot, instead. To avoid this, users may use the switch to cut power to the computer immediately following the shutdown, or may simply remove the power switch from the front panel and then use the console to shut down the computer by pressing **0**.

```
Restoring the first 446 bytes of MBR data, i.e. executable code area, for sda... done!
*****
Now resize the partition for sda1
ntfsresize -f /dev/sda1
ntfsresize v2.0.0 (libntfs 10:0:0)
Device name       : /dev/sda1
NTFS volume version: 3.1
Cluster size      : 2048 bytes
Current volume size: 2064511488 bytes (2065 MB)
Current device size: 2064513024 bytes (2065 MB)
New volume size   : 2064511488 bytes (2065 MB)
Nothing to do: NTFS volume size is already OK.
*****
The grub directory is NOT found. Maybe it does not exist (so other boot manager exists) or the file
system is not supported in the kernel. Skip running grub-install.
*****
Found NTFS boot partition among the restored partition(s): /dev/sda1
Head and sector no. of /dev/sda from EDD: 64, 63.
The start sector of NTFS partition /dev/sda1: 63
Adjust filesystem geometry for the NTFS partition: /dev/sda1
Running: partclone.ntfsfixboot -w -h 64 -t 63 -s 63 /dev/sda1
ntfsfixboot version 0.9
done!
*****
*****
*****
This program is not started by Clonezilla server, so skip notifying it the job is done.
Finished!
Now syncing - flush filesystem buffers...

"ocs-live-restore" is finished.
Now you can choose to:
(0) Poweroff
(1) Reboot
(2) Enter command line prompt
(3) Start over
[2]
```

7. After the computer has powered down, remove the USB drive and store it in a safe place.



# A

## Sample Code for DA-685 Customization

---

This section gives you a hard copy of the sample code included with the DA-685. These short programs are intended to be used either as standalone scripts, or to be included in scripts created to build custom features for end users. You can find the sample codes in C# and C++ from DVD\examples\Example\ folder

The following topics are covered in this appendix:

- ❑ **The DIO Control Sample Code**
- ❑ **The LED Control Sample Code**
- ❑ **The Watchdog Control Sample Code**

# The DIO Control Sample Code

Below we reproduce the LED control code. This is a simple code that users may freely modify this code to suit their needs.

```

/* Copyright (C) MOXA Inc. All rights reserved.
   This software is distributed under the terms of the
   MOXA License. See the file COPYING-MOXA for details.
*/

#include "stdafx.h"
#include <windows.h>
#include "..\Include\mxdev.h"

#define DI_PORT_NUMBER 4
#define DO_PORT_NUMBER 4

int _tmain(int argc, _TCHAR* argv[])
{
    HANDLE hDioDev;
    int port_no;
    int data;
    int nData = 0;
    int nRet = 0;
    int port = 0;
    int mode = 0;
    int n = 0;

    TCHAR sin;
    TCHAR smode;

    _tprintf(_T("DIO Test Program\r\n"));
    _tprintf(_T("\t (0) Exit Program\r\n"));
    _tprintf(_T("\t (1) Display DO & DI\r\n"));
    _tprintf(_T("\t (2) Set DO value\r\n"));

    sin = _gettchar();
    n = _tstoi(&sin);

    do
    {
        switch (n)
        {
            // if char == '1', display the DI/DO status
            case 1:
                // Open device
                hDioDev = mxdbgio_open();

                for (inti = 0; i< DI_PORT_NUMBER; i++)
                {
                    // Get digital input
                    port_no = i;
                    nData = mxdbgio_get_input_signal( hDioDev, port_no);
                    _tprintf(_T("DI[%d] = %d\r\n"), port_no, nData);
                }

```

```

        for (inti = 0; i < DO_PORT_NUMBER; i++)
        {
            // Get digital input
port_no = i;
nData = mxdgio_get_output_signal( hDioDev, port_no);
            _tprintf(_T("DO[%d] = %d\r\n"), port_no, nData);
        }

        // Close device
mxgpio_close(hDioDev);
        break;

        // if char == '2', Set the DO
        case 2:
            // Get Port Number
            _gettchar();
            _tprintf(_T("Input the Port Number (0 ~ %d) = \r\n"), DO_PORT_NUMBER-1);
smode = _gettchar();
port_no = _tstoi(&smode);

            // Get Value
            _gettchar();
            _tprintf(_T("Input the value (0 or 1) = "));
smode = _gettchar();
            data = _tstoi(&smode);

            // Open device
hDioDev = mxgpio_open();

            // Set DO
nRet = mxdgio_set_output_signal( hDioDev, port_no, data);

            if ( nRet == -1 )
            {
                _tprintf(_T("Set DO signal fail!\r\n"));
            }
            else
            {
                _tprintf(_T("Set DO signal success!\r\n"));
            }

            // Close device
mxgpio_close(hDioDev);
            break;
        }
        _gettchar();
        sin = _gettchar();
        n = _tstoi(&sin);
    } while (n != 0);

    return 0;
}

```

## The LED Control Sample Code

Below we reproduce the LED control code. This is a simple code that users may freely modify this code to suit their needs.

```

/* Copyright (C) MOXA Inc. All rights reserved.
   This software is distributed under the terms of the
   MOXA License. See the file COPYING-MOXA for details.
*/

#include "stdafx.h"
#include <windows.h>
#include "..\Include\mxdev.h"

#define LED_PORT_NUMBER 8

int _tmain(int argc, _TCHAR* argv[])
{
    HANDLE hLedDev;
    int port_no;
    int data;
    int nLED = 0;
    int nRet = 0;
    int port = 0;
    int mode = 0;
    int n = 0;

    TCHAR sin;
    TCHAR smode;

    _tprintf(_T("LED Test Program\r\n"));
    _tprintf(_T("\t (0) Exit Program\r\n"));
    _tprintf(_T("\t (1) Display LED\r\n"));
    _tprintf(_T("\t (2) Set LED value\r\n"));

    sin = _gettchar();
    n = _tstoi(&sin);

    do
    {
        switch (n)
        {
            // if char == '1', display the LED output status
            case 1:
                // Open device
                hLedDev = mxgpio_open();

                for (inti = 0; i < LED_PORT_NUMBER; i++)
                {
                    // Get digital input
                    port_no = i;
                    nLED = mxgpio_get_data( hLedDev, port_no);
                    _tprintf(_T("LED[%d] = %d\r\n"), port_no, nLED);
                }

```

```
        // Close device
mxgpio_close(hLedDev);
        break;

        // if char == '2', Set the LED output
case 2:
        // Get Port Number
        _gettchar();
        _tprintf(_T("Input the Port Number (0 ~ %d) = \r\n"), LED_PORT_NUMBER-1);
smode = _gettchar();
port_no = _tstoi(&smode);

        // Get Value
        _gettchar();
        _tprintf(_T("Input the value (0 or 1) = "));
smode = _gettchar();
        data = _tstoi(&smode);

        // Open device
hLedDev = mxgpio_open();

        // Set LED
nRet = mxgpio_set_data( hLedDev, port_no, data);

        if ( nRet == -1 )
        {
            _tprintf(_T("Set led signal fail!\r\n"));
        }
        else
        {
            _tprintf(_T("Set led signal success!\r\n"));
        }

        // Close device
mxgpio_close(hLedDev);
        break;
    }
    _gettchar();
    sin = _gettchar();
    n = _tstoi(&sin);
} while (n != 0);

return 0;
}
```

## The Watchdog Control Sample Code

```
/* Copyright (C) MOXA Inc. All rights reserved.
   This software is distributed under the terms of the
   MOXA License. See the file COPYING-MOXA for details.
*/

#include "stdafx.h"
#include <windows.h>
#include "..\Include\mxdev.h"

int _tmain(int argc, _TCHAR* argv[])
{
    PVOID fd; // Handle to device, obtain from mxwdg_open
    ULONG time;

    // starts watchdog timer
    time = 10;
    fd = mxwdg_open(time);

    while ( TRUE )
    {
        _tprintf( _T("Press \"ENTER\" in 10 seconds\n, 'q' to exit"));
        TCHAR ch = _gettchar();
        if ( ch == (TCHAR)'q' )
        {
            break;
        }

        // refresh watchdog timer
        mxwdg_refresh(fd);
    }

    // stops watchdog timer
    mxwdg_close(fd);
    return 0;
}
```