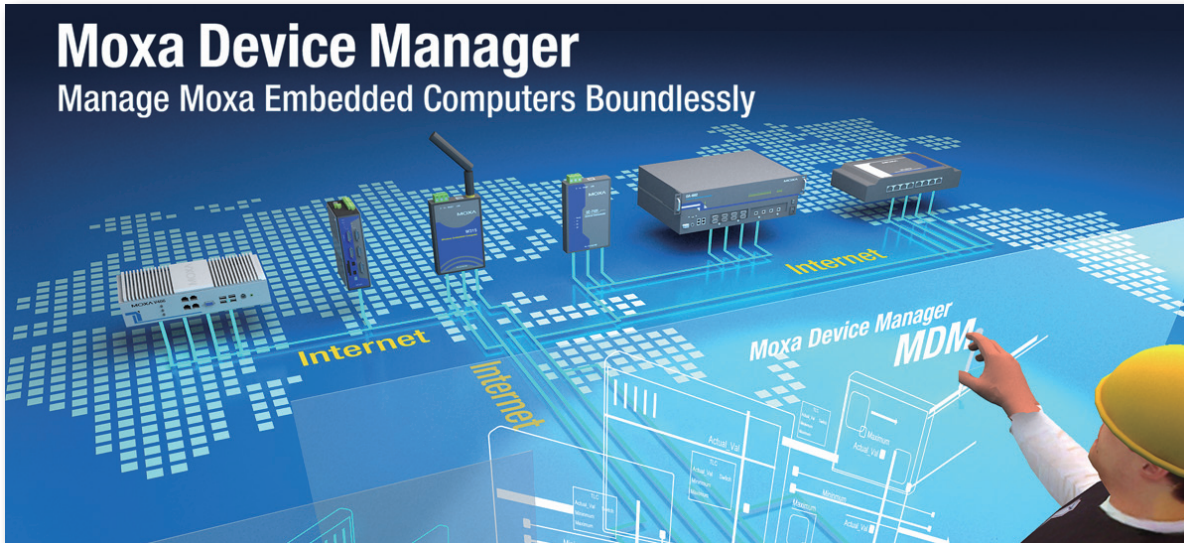


# Moxa Device Manager

*Unbounded management for Moxa embedded computers*



**Moxa Device Manager (MDM for short)** is an easy-to-use remote management tool for managing Moxa's ready-to-run embedded computers on the Internet. Moxa's embedded computers make excellent front-end computers at remote sites for onsite data collection and industrial control applications. Simply put, MDM makes it easy for system administrators to manage remote computers.

## Features

### Remote Control Management

- Supports all of Moxa's embedded computers and all operating systems (Linux, CE, XPe)
- Control and monitor remote devices over the Internet
- Broadcast search for Moxa embedded computers on the same subnet
- Get instant device status
- Get device system information (IP, model name, product image, firmware version, OS, hostname, CPU type, memory information, and storage information) of all devices, all from the main page

### Command-line Free Configuration and Maintenance

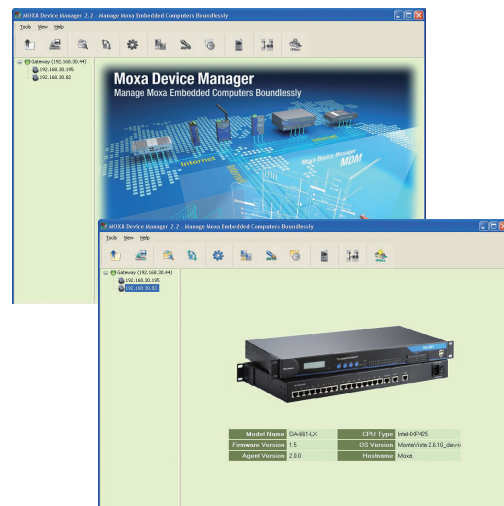
- Launch programs automatically at boot-up
- One-to-multiple file transfers including file uploads and file downloads
- Perform remote file system management
  - > Download/upload files
  - > Rename a file or directory
  - > Run/delete a file
  - > Create a directory
  - > Get the file list of a directory
  - > Change file mode (Linux only)
- Remote program monitoring and process control
- Remote system administration
  - > Network configuration settings
  - > Launch programs automatically at boot-up
  - > System time set up
  - > Reboot devices

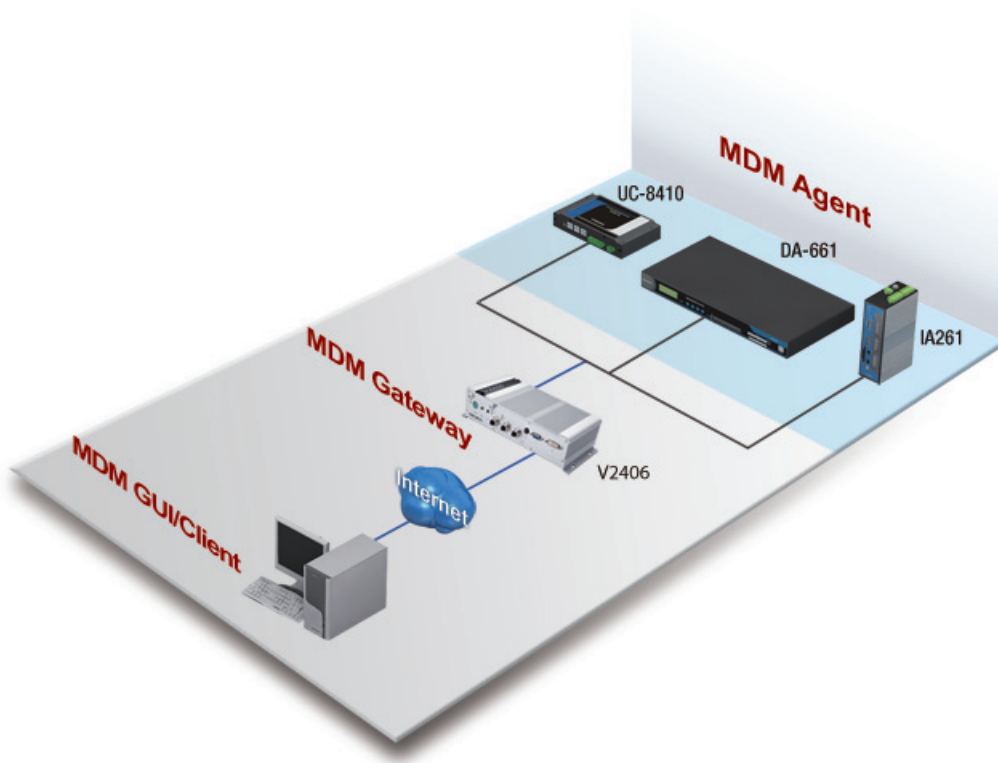
### User-friendly GUI

- Easy to use graphical user interface gives users "click and operate" management capability of remote devices
- Friendly window-based utilities make configuration easy

### Easy Installation and Setup

- MDM Agent program running on an embedded computer can be started automatically at boot-up
- MDM Tool and Gateway can be installed on any PC running Windows XP





## : System Requirements

### Software Requirements

**Operating System:** Windows XP (MDM Tool and MDM Gateway only)

### Hardware Requirements

**CPU:** Intel Pentium 4 processor or higher (MDM Tool and MDM Gateway only)

**RAM:** 1 GB

**Gateway:** 512 MB (MDM Tool and MDM Gateway only)

## : Free Download Information

Moxa device manager comes with MDM Agent, MDM Tool, and MDM Gateway (users can download the package from the Moxa website in the Support/Software section)

All Items Include:

- MDM Tool Software
- MDM Agent & Gateway Software